



APPENDIX D

public input from project office

With the development of the Indy Greenways Master Plan, it was known that there would be a tremendous amount of coordination needed---between the consultant and Indy Parks, with neighborhoods and community groups, with city agencies and regulatory bodies, and with other members of the community. In order to provide a level of consistency for this coordination, a “project office” was established. The project office was set up in Boulevard Station, the historic train depot at 38th Street along the Monon Trail. One day a week, project planners staffed the office. During this time, the team facilitated coordination meetings with other agencies or community groups, and allowed members of the general public or representatives from other organizations an opportunity to stop by the office, talk about the project, view progress, or share any input on the project. By providing these consistent office hours, the project was better positioned to accommodate and address the large amount of input received on the plan. The project office opened at the beginning of the project and was opened every Wednesday through the end of August 2013. The following pages summarize public input received through meetings at the project office.



Champion

210 East 33rd Street
Indianapolis, IN 46205
Mail:
9425 North Meridian St. #238
Indianapolis, IN 46260
Mobile: (978) 397-4245
DougDaySki@Mindspring.com

coordination NOTES

Group: Destination Fall Creek
Attendees: Doug Day
Ron Taylor
Date: December 5, 2012
Location: Boulevard Station

MEETING NOTES:

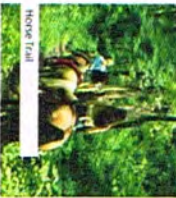
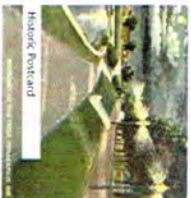
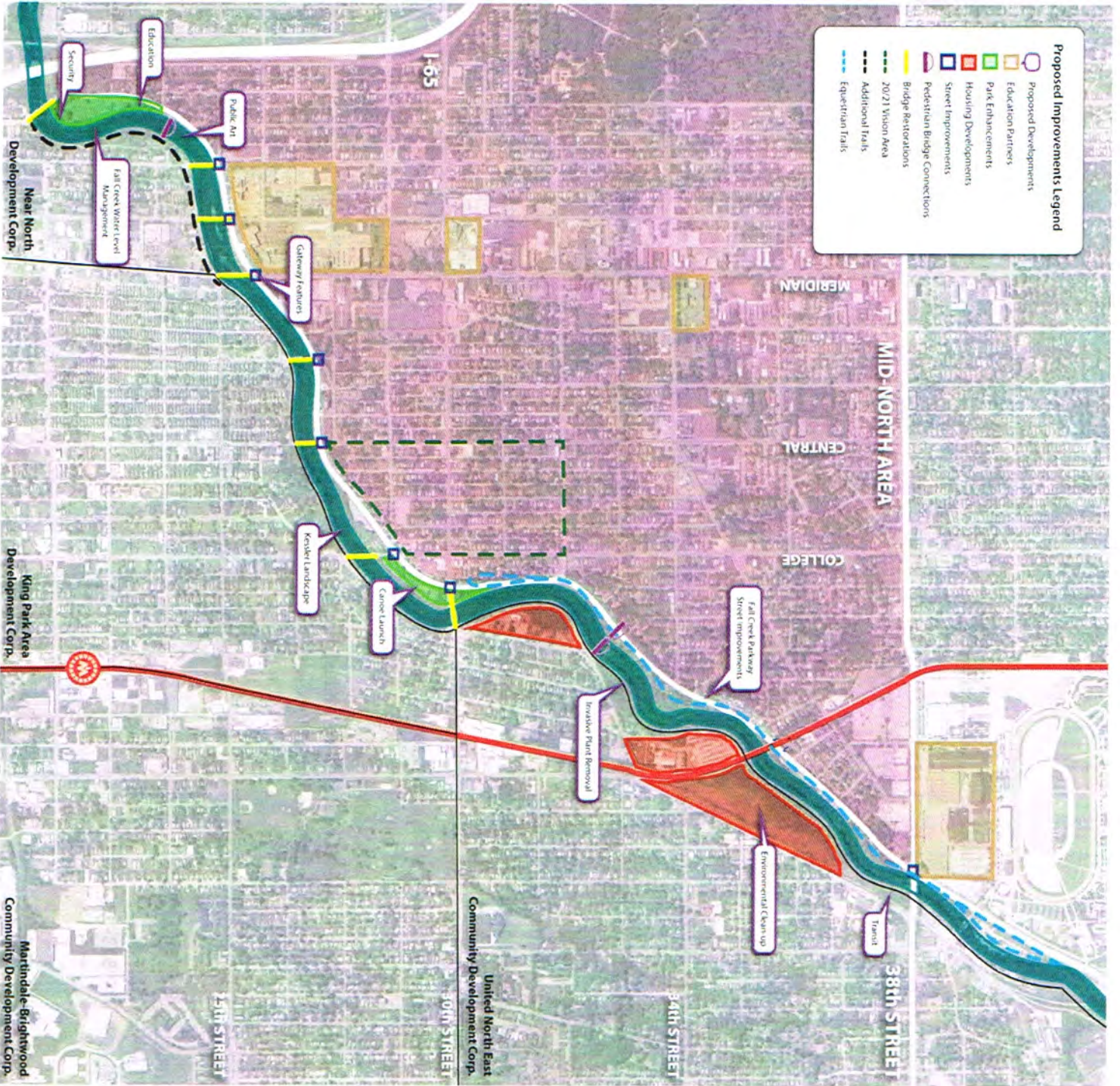
- Mid North Quality of Life Plan -
- Children's Museum has a neighborhood working group.
- Many people go "through" mid-North - QOL Plan wants people to come "TO" midnorth.
- 3 1/2 miles of Fall Creek in Mid-North neighborhood
- MISSION STATEMENT
- Impacts to Kessler's Plan:
 - CSO
 - Fall Creek Parkway 5 lane (not Kessler's 2 lane)
 - Invasive Plant species
 - Fall Creek Trail - 1 1/2 mile between 38th and College where you don't have to stop
- 25 acre Norfolk ³/₄ Souther Switchyard - ~~1~~ 4 CDC's in area
- Area could become a transportation center - Intersections of rail, E-W BET, and Monon
- Reconnecting to our Waterways - Brian Payne
- People Bridge idea - over parkway
- Trail Design includes parking areas near 30th ~~st~~ and at Broadway Church
- Central Avenue Bridge - Samuelston - Issues
- At least 5 ~~+~~ homeless people live along Fall Creek - good guys.
- Should look at Kessler Park and Fall Creek Place trail.
- Can there be loops into the neighborhood? Suggested 28th Street - low traffic plus it will be torn up by the Deep Rock tunnel. Has talked to Jamison about painting bike routes/lanes until the tunnel project happens.
 - Master Plan showed using ~~33~~ 28th Street to Illinois - should probably be capitol.
 - Tunnel ~~is~~ under Fall Creek - Doug thinks it would be a good horse access. Thinks horses would calm traffic.



Doug Day (Destination Fall Creek) - Continued

- Discussed potential of neighborhood loop.
- Delaware Street Bridge (call it the Spider) - Gateway to neighborhood.
 - No good crossing. One suggestion was a rotary to consolidate the Parkland. Cancer survivors Park would move to this area.
- No sidewalk between Meridian & ~~Delaware~~ and Central
- Meridian - Educational corridor
- One of his hot buttons - using the Fair Train bridge.
- Potential Crossings (Improved)
 - Meridian
 - Delaware
 - Central is fine - has crosswalks and signs
 - College
- Central is now 2-way north of 34th - will soon be two-way all the way down to Parkway.
- Apartments along would like to have a gateway to Monon
- Neighborhood is one of the "pilots" for Reconnecting to our Waterway
- A2504, Green Street, Green 3 - Implementation Plan for Destination Fall Creek
- Group meets monthly - Jan. 15 5:30 next meeting
- Group has a task force with work groups
- Doug on Board of Mapleton Fall Creek CDC
- Destinationfallcreek.org, dfcindy.org
- "Now that Time has had its Say" - BOOK WE SHOULD READ

- ### Proposed Improvements Legend
- Proposed Developments
 - Education Partners
 - Park Enhancements
 - Housing Developments
 - Street Improvements
 - Pedestrian Bridge Connections
 - Bridge Restorations
 - 20/21 Vision Area
 - Additional Trails
 - Equestrian Trails



SCHMIDT
ASSOCIATES
STRATEGIC
DESIGN
CONSULTING

Destination Fall Creek

Transforming Fall Creek into a recreational, residential and commercial destination with access to art, nature and beauty for every citizen, every day.

- Clean up the water in Fall Creek
- Remove invasive brush and trash from the banks and replaced with native trees
- Enhance the views to and from the beautiful historic Kessler bridges
- The Trail & Greenway system will be completed through the area
- Horse trails area added
- Footbridges across the Fall Creek Parkway will allow access from the Mid North to Fall Creek without impacting traffic on the Parkway
- 60 acres of vacant, abandoned, and blighted areas along the East side of the Creek would be redeveloped for commercial, recreational, and residential uses
- Footbridges across Fall Creek allow access to Fall Creek Park from the East
- Soccer fields and other recreational enhancements are constructed
- Natural spaces and places will offer enhanced educational opportunities for area students from our many educational institutions
- Senior living will be supported by accessible amenities
- Gateways and public art will welcome visitors and residents to the area
- Activities will encourage visitors to stop, stay, and explore
- The planned rail line goes right by Destination Fall Creek
- There are many connected transportation modes for residents: pedestrian, bicycle, bus, automobile, train
- A wide variety of housing options will be affordable to all income levels

If you have any questions or want to be a part of the working group that pushes Destination Fall Creek forward, please contact:

Doug Day: dougdayski@mindspring.com 978 397-4245,

Kelli Mirgeaux: kelli@mfcfc.org 317 442-4588 or

Chris Barnett: cbarnett.indy@gmail.com 317 523-9260



coordination NOTES

Group: Brian Staesnick
Attendees: Ron Taylor
Scott Siefker
Ben Jackson
Date: December 12, 2012
Location: Boulevard Station

MEETING NOTES: RE: Indy Green Growth Loop

- Looked at how Indy could reposition first ring suburbs
- 40% of downtown is parking, ~~70~~
- Walkscore - 37 Park score - 31 (36/40)
- Goals - Reduce, grow, connect
- Beltline rail line has only 1 current user
- Loop would connect all of the CDCs
- Has presented this concept to several groups. Reconnecting our Waterways has formed a subcommittee.
- National starch is only remaining industrial
- Part of tracks on north side are missing
- Lilly owns ROW - 999
- Approximately 16 miles around the loop (15.31)
- Combine train lines with trails and paths.
- Brian shared his presentation with us.



Ron Taylor

From: Staresnick, Brian <BStaresnick@ratioarchitects.com>
Sent: Monday, December 10, 2012 3:12 PM
To: rtaylor@TSWDesignGroup.com; Scott Siefker (ssiefker@tswdesigngroup.com) (ssiefker@tswdesigngroup.com)
Subject: Greenway Master Plan + Green Growth
Attachments: Capture1.JPG; Capture2.JPG; Capture3.JPG

Hi Ron/Scott,

I had intended to discuss this with you last weekend, but we ran out of time. I've recently presented the Indy Green Growth Loop, an urban design proposal that repurposes the "abandoned" Indianapolis Belt Railroad in an attempt to encourage development towards Downtown and reposition first-ring suburb neighborhoods (which I argue are the Indy neighborhoods that are past due for resources, and are most susceptible to provide the biggest payback/benefit to the City).

I've presented the idea to Brian Payne, Health and Hospital, KIB, and the Reconnection our Waterways Steering Committee. Wayne Zink, Gail Payne, Meg Storrow, and Michael Kaufmann are interested in creating a new steering committee dedicated to exploring the idea further. Because of your involvement with the Greenways Master Plan, I hope I can share the presentation with you and get your valuable feedback.

Perhaps we could meet up later this week, or next?

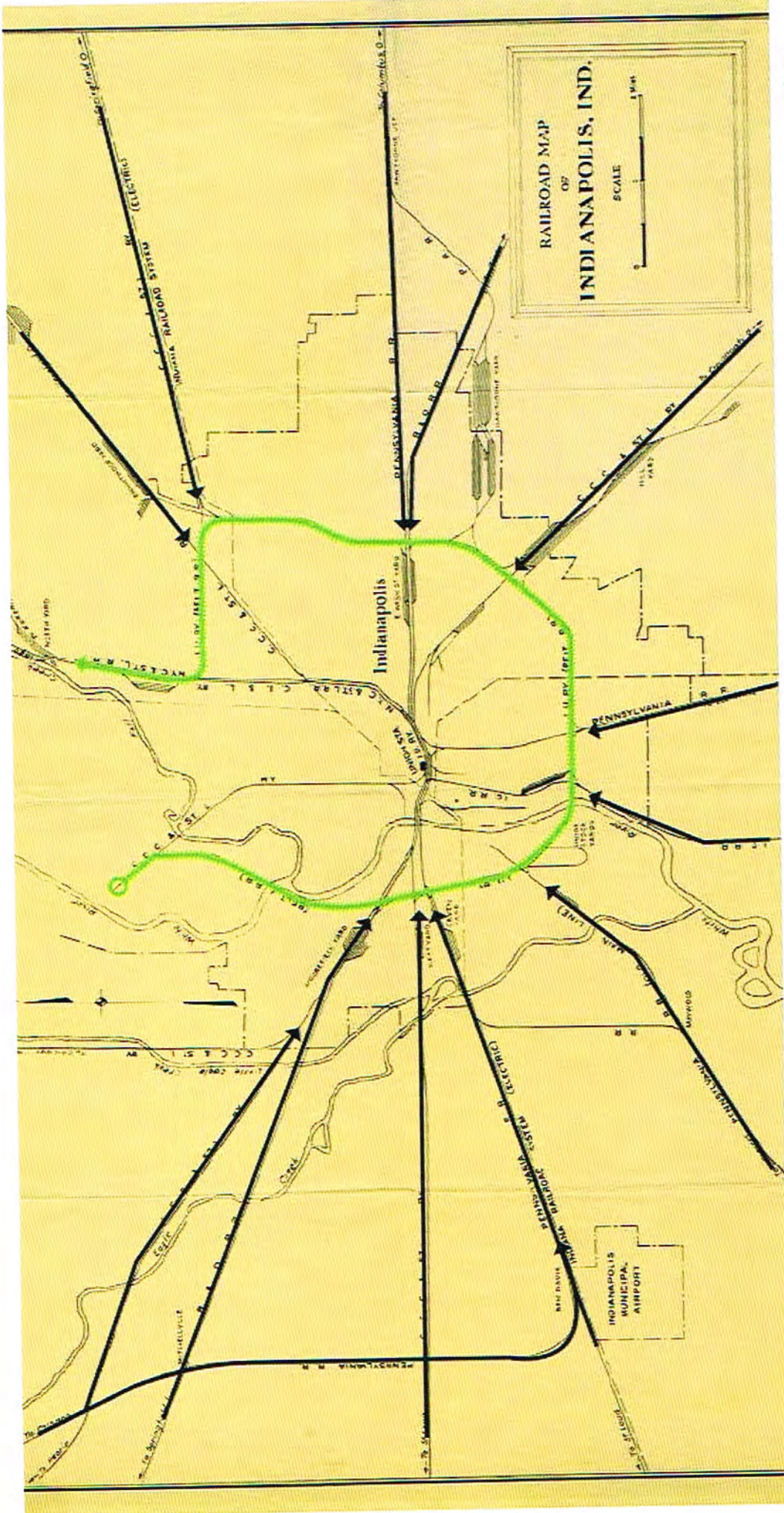


Brian Staresnick, ASLA
Landscape Architectural Graduate and Urban Designer
Direct 317.275.6971

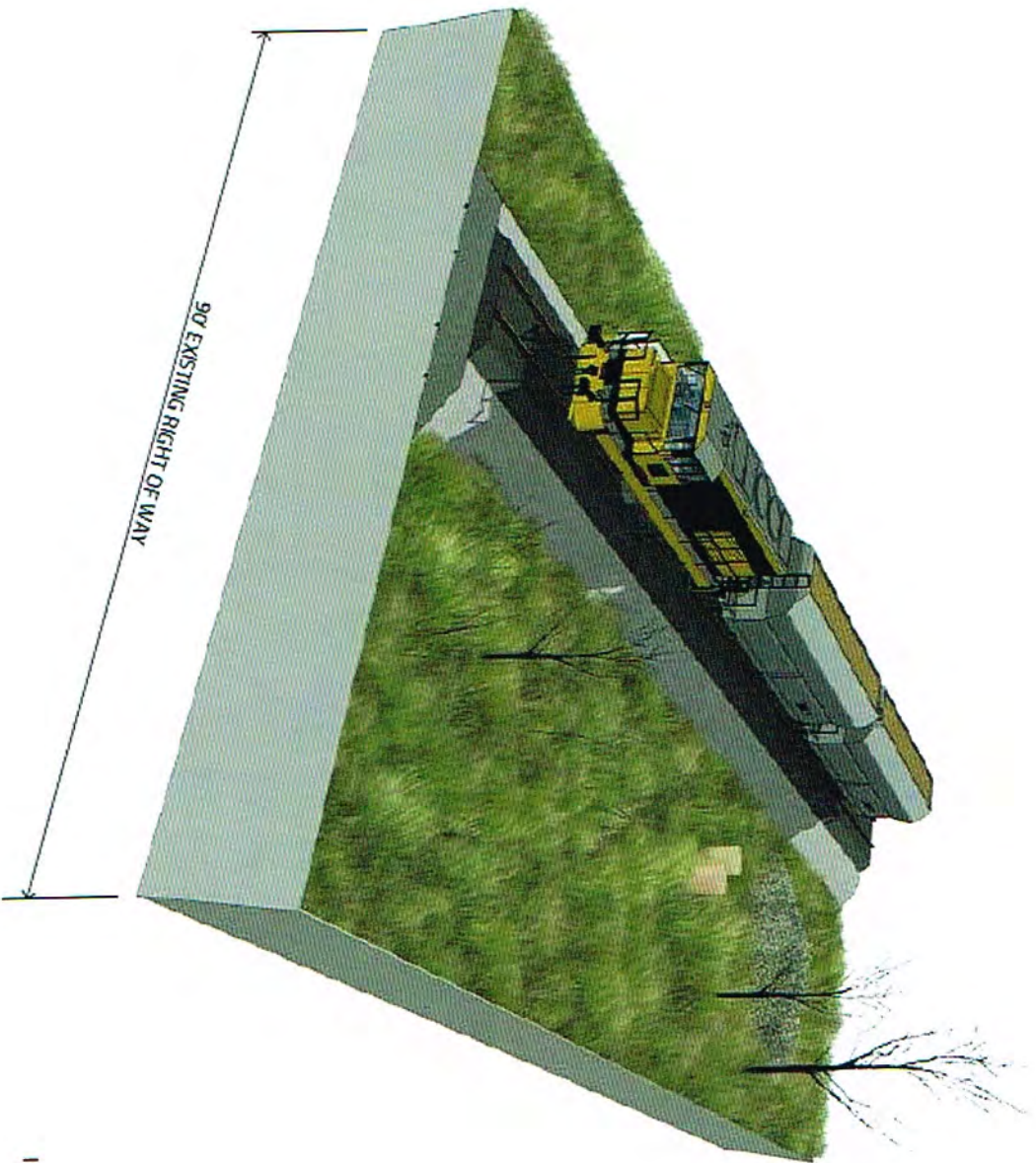
RATIO | defining spaces, creating places, enhancing community (sm)
In partnership with [smdp, LLC](#)

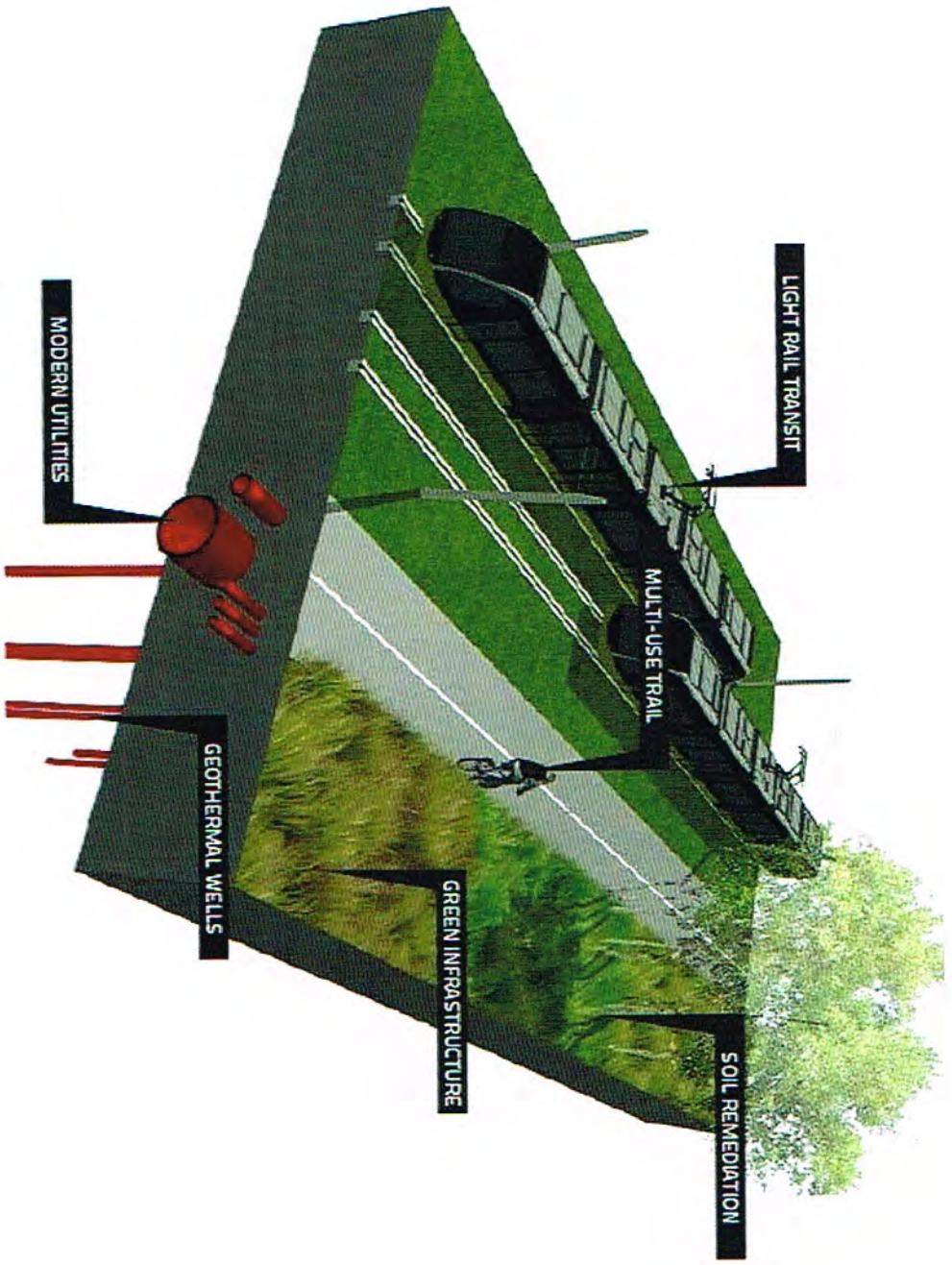
[RATIOarchitects.com](#) | Indianapolis 317.633.4040 | Champaign 217.352.7696 | Raleigh 919.821.0805 | Chicago 312.465.2359

RATIO Architects, Inc. Confidentiality Notice: This email, including any attachments, may contain confidential or proprietary information and is for the sole use of the intended recipient(s). Any unauthorized review, use, disclosure or distribution is prohibited. If you have received this email in error, please notify the sender immediately and destroy all copies of the original message. Copyright Notice: Any artwork or images to be reproduced or published in any manner shall be credited "RATIO Architects, Inc." or be accompanied by the line "© RATIO Architects, Inc."



RAILROAD MAP
OF
INDIANAPOLIS, IND.
SCALE
1 MILE







coordination NOTES

Group: IACED, Indy Runners
Attendees: Rose Scovel
Ron Taylor

NOTE: Comments Attached

Date: December 18, 2012
Location: Platform - IACED office

MEETING NOTES:

Rose represents both Indiana Assoc. of Community Economic Development and Indy Runners:

- Suggested checking out CIBA Facebook page (Indy Cog)
- Safety - big issue - how do we make safety more important? Especially where users intersect.
- Police patrols on Monon good. Hasn't seen any on tow path. Friendly.
- Having trail that isn't paved is a must. Likes Monon's sidepath

WEAKNESSES:

- Check hours - closed at 9:00 or dusk.
- CIBA example of user being pushed off trails after hours.
- Does not feel unsafe on Central Canal towpath.
- Fall Creek - pavement is a huge tripping hazard.
- Signage at crosswalks on White River Greenway
- Drinking Fountains are scarce - need more.
- Trail signage would be good way to blend all these dif. user types.

OPPORTUNITIES:

- Deck along Monon - maybe a formal agreement needed.
- IndyGOG/CIBA - Used magnets to clear tacks/nails - Good partnership
Need to find ways to continue.
- Need more trash cans!
- Wants to be able to get ALL THE WAY across 38th on one signal.
- Watch # of people that turn around instead of crossing street.
 - Mobile reporting of problems - TWEETING
 - Confusion over who maintains trail and greenways.
 - Confusion over what is included in the system.
 - ↳ White River State Park (closes), Cultural trail.



Rose Scovel (Continued)

- Need to treat greenways like roads when it comes to construction detours.
 - People rely on these.
- Mile locators - better communication needed on system. Called them "Uber awesome"
- Connections to west important!
- Smoking (Broad Ripple, south of 38th)
- Off-leash animals (S. Broad Ripple to 96th St)
- Rocky Ripple Town Council - ~~opposing~~ trying to remove trail use of small drives. They want it closed. Would create a gap in towpath
- Tagging on greenway signs make some question the safety.
- Rebuild First - because we already have a substantial system in place.
- Used an example of 20 mile loop from her house

Indy Greenways SWOT (Rose Scovel, AICP)

Strengths

- Length of Monon
- Call boxes south of 38th Street
- Drinking fountains at Deaf and Blind Schools
- Police patrols on the Monon
- Different surfaces (Central Canal Tow Path)
- Urban and rural/suburban greenway settings
- Connectivity of greenways
- Cultural Trail
- Crushed stone sidepaths along Monon
- Access to Jordan Y from Bike Hub
- Access to Bike Hub Y from Cultural Trail
- Rarely alone – lots of users (Monon and Tow Path)
- “community of people” on Monon

Weaknesses

- Restricted hours on the Monon
- Porta potty on the Monon being removed seasonally/periodically
- Goose poop on the Central Canal Tow Path
- Maintenance needed on Fall Creek, unsafe pavement
- Crossing of the Central Canal Tow Path to get to White River Greenway needs safety improvements
- Sharp angle at 86th Street on Monon is unsafe
- 86th Street trail head on Monon can be congested
- No drinking fountains on downtown Canal
- Congestion on Monon at peak times
- People not using safety practices

Opportunities

- Connections/signage linking greenways to transit
- Formal partnerships with Indy Runners to maintain deck on Monon north of Broad Ripple Avenue
- Continued partnership with IndyCOG and CIBA for special projects
- Additional trash receptacles
- Additional porta potties
- Demand responsive signal at 38th & Monon

- Better (mobile) reporting of problems (do they do to DPW or Parks?)
- East/west connectivity north of the Central Canal
- Treat greenways , at least the Monon, like roads and create safe, viable detours for construction work
- Complete Fall Creek connection to Ft. Ben Harrison. Terminus at Skiles Test Park is awkward
- Enforce bike laws (lights, etc.)
- Communicating the purpose of the block number identifiers on the Monon to the public
- Finish the planned system
- Connect 56th Street (Eagle Creek) to Tow Path
- Get the B&O Trail built

Threats

- Safety perception limits use, scares off new users
- Smokers on the trail impair the enjoyment of runners
- Unsupervised children
- Animals off-leash
- Vehicles turning right out of Marsh on to 86th Street at the Monon crossing
- Rocky Ripple re: Central Canal Tow Path (connectivity, Indy Runners training program)
- Graffiti – seems like signs are often tagged



KATHRYN WERTZ
 Economic Development
 Coordinator
 T 317-927-9881 ext. 4
 F 317-927-9978
 kathryn@nearnorthconnect.org

coordination NOTES

Group: Near North
 Attendees: Kathryn Wertz
Ron Taylor
Scott Siefker
 Date: December 18, 2012
 Location: Boulevard Station

MEETING NOTES:

- Near North - 38th to New York, Meridian to Interstate
- Lack greenway connections
- Have new bike lanes
- North Meridian Street Strategic Improvement Plan - on website under business resources
 - Identified connections to Fall Creek Greenway
- Make Meridian Street Pedestrian Improvement (Also streetscape stand.)
- ~~S~~ New retail cluster along Meridian
 - Student housing/mixed use retail @ 25th St.
 - New Charter School at 2323 Illinois
 - Connections to restaurants and other businesses south of creek
 - Another Charter school 2230 Meridian
- Want to attract Ivy Tech ~~students~~ students South of Creek
- Barton Park West is included in the Near North area
- 30th Street - Would connect Near North to Central Canal and White River through UNWA (United Northwest Area).
- Ratio did a plan for Ivy Tech that showed several pedestrian bridges from their campus to the interstate
- Most residents don't have ownerships of Fall Creek
- There has been lots of talk about recreation facilities in south portion of Near North.
- Meridian Street corridor is the most underserved corridor (South of Fall Creek)
 Economic Development is key here!
- Public meeting - many have been at Ivy Tech, but there is orientation issues.
 She thinks Central Library would be attractive for her residents.

TAYLOR
 SIEFKER
 WILLIAMS
 design group



- Uses Monon trail - but BAD access
- Likes White River, but has to go down 30th.
 - Does not feel intimidated on WR

RESOURCES:

- North Meridian Street Strategic Improvement Plan
- Mid North Quality of Life Plan
- Ivy Tech plan

Let her know if there is anything else we need.

Plan connections:

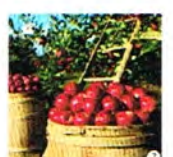
- Meridian Street Pedestrian Improvements
- 22nd Street
- Cultural Trail

Fall Creek Conceptual Master Plan Including Ivy Tech Community College

Indianapolis Educational Stream Corridor



Site Neighborhood Entry Node



Aesthetics

- Remove invasive species to open the viewshed of the creek
- Construct signage and gateway landmarks as identifying features of the community
- Provide opportunities to display art
- Bring year-round color and seasonal interest to the creek

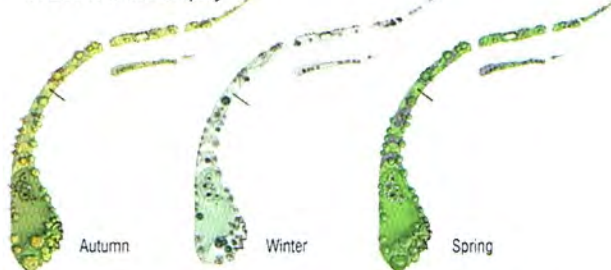
Connectivity

- Provide paths linking the creek bank to surrounding neighborhoods and community assets
- Encourage the development of more walkways both along the creek and along streets
- Reconnect the neighborhood to its natural environment by providing spaces for native species to thrive
- Connect what students are learning in their classrooms to real life experience with natural systems along the creek
- Display art from students and professionals in the area further identifying the neighborhood to visitors

Economics

- Increase in value by removing invasive vegetation
- Connect adjacent city blocks with a pedestrian trail
- Facilitate local food production with a community garden and orchard
- Decrease maintenance with colorful meadow grasses and wildflowers

Seasonal Color Display



Ecology

- Replace invasive plant species with native plantings to help reintroduce native wildlife
- Protect creek banks from erosion while reducing maintenance with a selective plant palette
- Develop areas along the creek for scientific study

Education

- Implement a pedestrian boardwalk with learning stations to study the creek's eco-systems
- Provide a botanical orchard and children's garden to serve as training in the culinary arts
- Emphasize observation of riparian meadow habitat
- Construct a passive stump garden for outdoor learning, reading, & theater activities
- Display pedestals to showcase student art
- Provide outdoor learning classrooms with teaching stations

Well-being

- Encourage exercise with a linear trail
- Preserve the open lawn for recreation Barton Park West
- Achieve places of peace and contemplation with natural site seating along the creek

1. Subspaces Marked by the Art Students at Ivy Tech to be Displayed in Areas of Riparian Plantings

2. Research Pathway as an Interesting Learning Area with Movable Displays Reorganized from the Removal of Invasives

3. Lower Level Classroom With Gabion Retaining Wall Seating

4. Hanging Art Along Historic Wall

5. Seating to Create Energy and Provide Education

6. The Wilcox Orchard Express the Form of The M-G Heavy Log

7. Seating to Create Energy and Provide Education

8. Areas of Seating to Provide Energy and Provide Education

Barton Park West

Barton Park

Pedestrian Bridge Link

Autumn

Winter

Spring



coordination NOTES

Group: Friends of Holliday Park
Attendees: ~~Shirley~~ Shirley Fry
Ron Taylor

Date: December 19, 2012
Location: Boulevard Station

MEETING NOTES:

- Terribly disappointed that there is no access to Park ~~at~~ from Trails - no one can get there on bike
- Bike Lanes - Have put bike lanes on 71st Street which links to College and Monon
- Group thinks that a bike connection could be made on Hoover to 64th to the park
- Would also like to see a pedestrian bridge over Meridian Street.
- Blick Educational Trail (soft surface) - Arden could have bike lanes to College, but you ~~can't~~ can't get on college from Arden.
- At 71st and Spring Mill, there are signs for Eagle Creek Park, but not to Holliday Park
- Way too many signs on bikeways (bike lanes)
- Large neighborhoods ~~can't~~ can't access Holliday Park by walking or biking.
- 71st is dangerous - lots of walkers in bike lanes - very dangerous especially at night.
- 71st is almost done being striped
- Arden trail - could only be walked - trails low on the river - can't get bikes down there.
- Plan in place for restoration of Ruins - Eric Fulford completed the plans before he died.
- New Meridian St. bridge - sidewalks on the south, but none on the north.
- Can park along Arden if we want to go take a look at it. Should also drive on Hoover. Look at 75th/71st Street.
- On Hoover, houses are set back far enough to add sidewalks, but not sure how much ROW exists.



DROVE IN ON TRAIL.

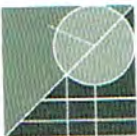


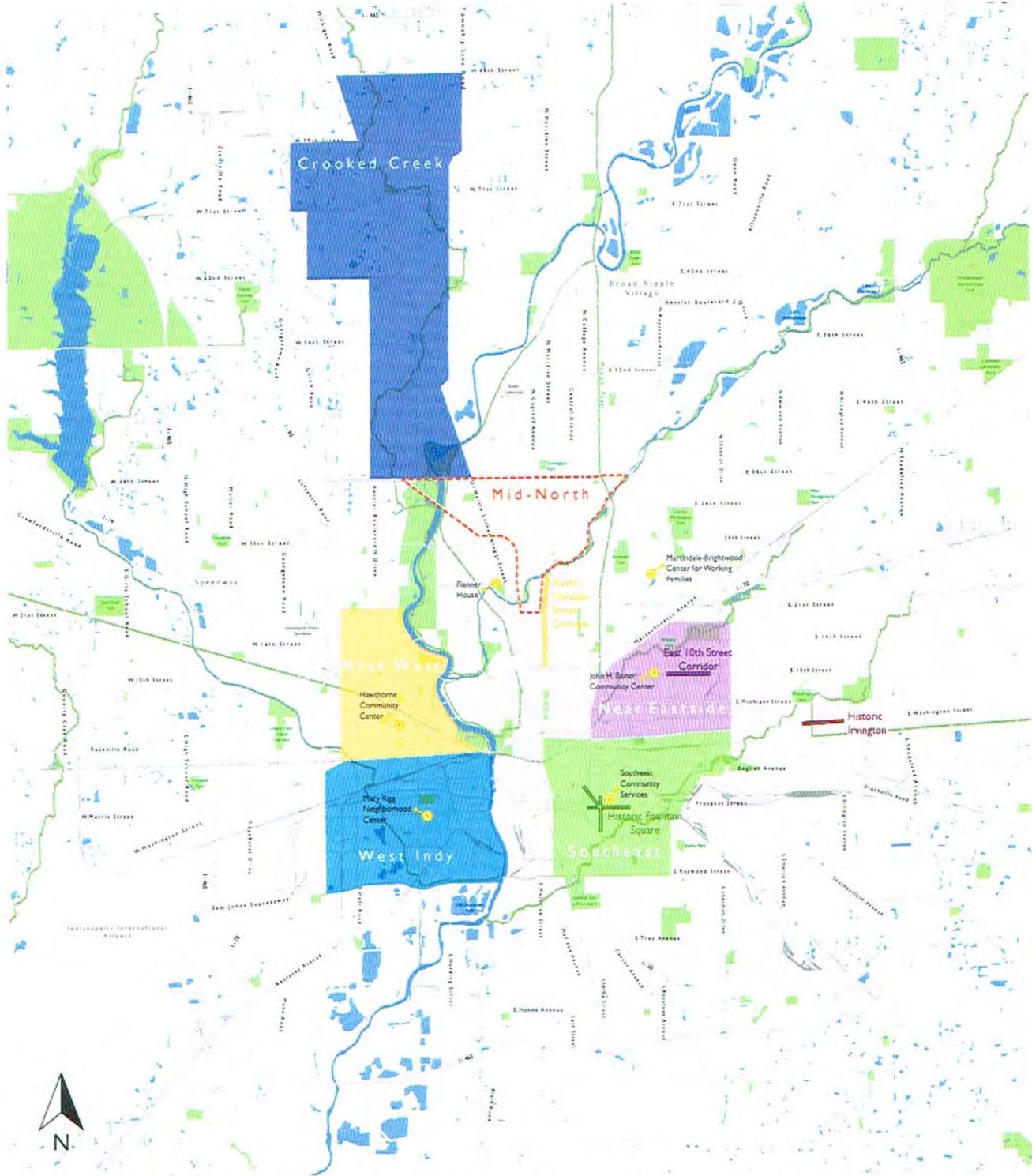
coordination NOTES

Group: LISC
Attendees: Molly Trueblood
Ron Taylor
Scott Siefker
Date: December 19, 2012
Location: Boulevard Station

MEETING NOTES:

- Local chapter of national group
- Quality of life plans - National LISC standard
- Near east, mid north, west Indianapolis (near west), west Indianapolis Fountain Square, Crooked Creek. - Neighborhood areas, CDC Service Areas
- Quality of Life Plans - usually includes connectivity trails
- Mid-north one of active ones - extension of Fall Creek.
- Usually starts with Visioning session - one of working groups is Doug Day's group.
- Molly can help us get connected with people on quality of life plans
- LISC supplies grants and loans
- Latest - Northeast - Monon corridor, 5 mins. to west (College), 20 mins to east (Keystone) - Visioning this Spring
- January 8 - Transportation Connectivity Summit - Crooked Creek CDS south of 71st & Michigan 6:00-8:00pm
 - Good introduction to community stakeholders
- January 18 - Reconnecting our Waterways Annual Meeting - Check time.
- IC&D - Ind. Coalition ~~of~~ for Neighborhood Development - Map on their website.
- My neighborhood.gov - will give you CDC and neighborhood Development
- Most quality of life plans just talk about connecting or finishing trail segments.
- Molly will send links to Quality of Life plans.
- Don't know how well the complete streets will be
- Molly does grant program - works with ALL the CDCs.
 - On Board with Indy GOG
 - Cleaning of bike lanes is a problem - have to be careful not to build so many bike lane that they can't be maintained.
 - Molly asked about % of last plan completed. - SEND HER INFORMATION.





SUSTAINABLE COMMUNITIES

- Crooked Creek
- Near Eastside
- Southeast
- West Indy
- Near West

FOCUS COMMERCIAL DISTRICTS

- North Meridian Street Corridor
- East 10th Street Corridor
- Historic Irvington
- Historic Fountain Square

QUALITY OF LIFE PLANNING

- - - Mid-North

CENTERS FOR WORKING FAMILIES

- 🏠 Flanner House
- 🏠 Martindale-Brightwood Center for Working Families
- 🏠 John H. Boner Community Center
- 🏠 Southeast Community Services
- 🏠 Mary Rigg Neighborhood Center
- 🏠 Hawthorne Community Center



coordination NOTES

Group: Indy MPO
Attendees: Jeremy Moore - MPO
(Prog. Mgr. on Transit and Regional
bike plans)
Date: January 10, 2013
Location: City-County Building 1920

MEETING NOTES:

Indy Transit:

- Everything has been rebranded
- NE, N-S, E-W lines - in planning studies to determine types, vehicles, enhancements. John Meyers (HNTB), Jennifer Pyrz (PB)
- Station locations still under development
- They have studied connections to greenways
- Now looking at street options to get to new transit station s. of City-County Building instead of Union Station
- Check out Cumberland stop - great enhancements. IndyGo has issues with maneuverability
- Can get us preliminary station locations for Green Line (NE) and some info for Blue Line (HNTB)
- New map (w/ rebranded routes) being released. Website going live today as well. Map will be on the website.
- Innerbelt - Southern end may be viable now because of the change to the on-street option to the new transit station. Reuse of old Southern belt has been tabled.
- Innerbelt - NW portion not used - bridge upgrades would be needed for train traffic.
- Pay attention to thickness of yellow lines - thickness on the map lines is frequency. The thicker lines are the better connections for bikes due to limited space for bikes on the bus. Freq. will get to ~~one~~ every 10 mins.
- Castleton to Pyramids line - will increase frequency on that line later in the year. 2/3 of ridership will see increase in frequency.

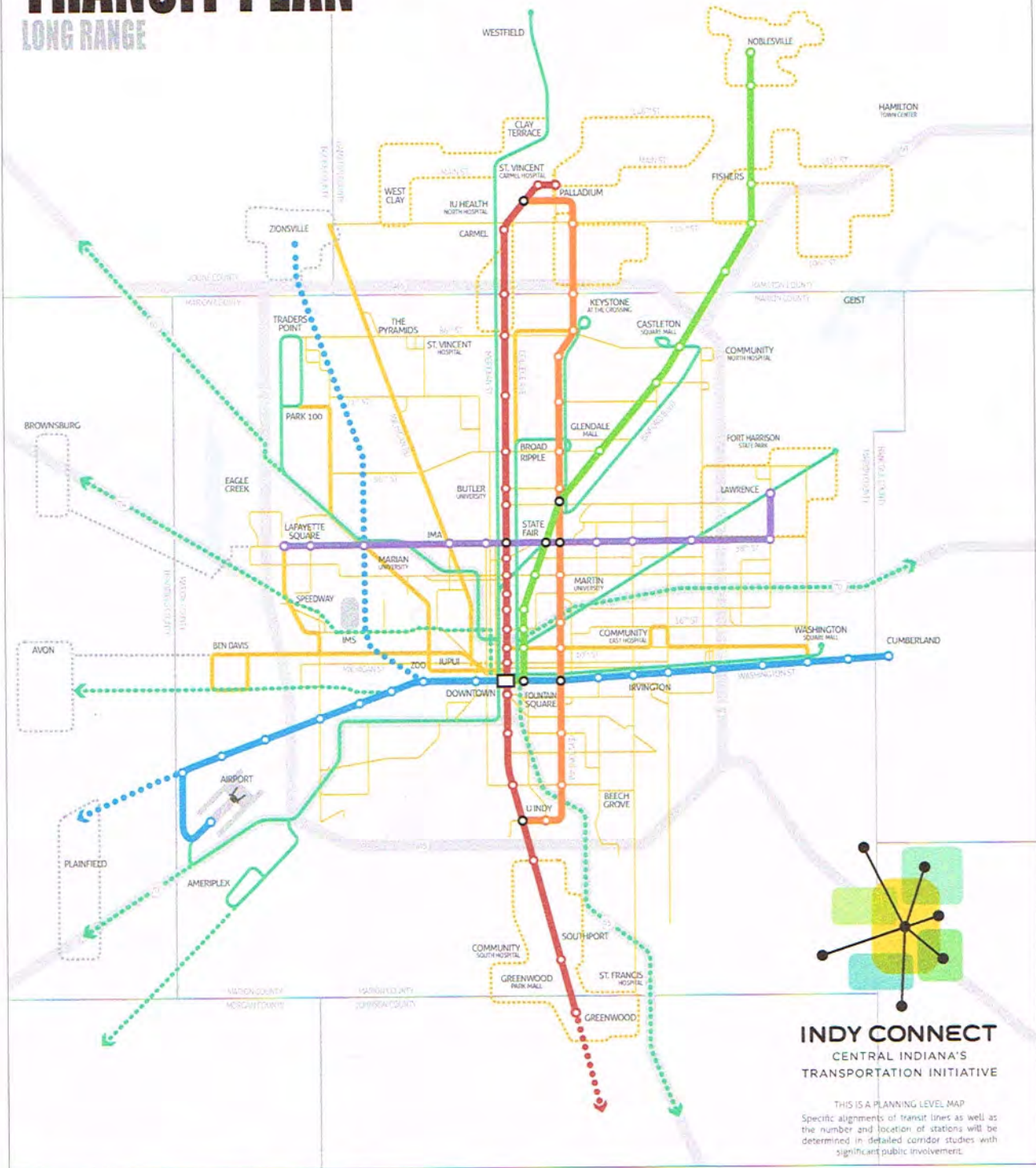


Indy Connect Regional Bike Plan

- Treated bikes like roads - Prioritized projects
- Scoring criteria might not necessarily match priorities of communities at the time.
- MPO controls 30% Funding - Locals 70%
- Higher scored priorities get priority on grants | MPO controlled money
- If we do priority list - pay attention to Priority List in bike plan
- This list does ~~set~~ priority list for grants
- List gets updated every four years. ~~This regional~~
- Map page 31 - Red represents funded projects
- Data collection - all come from local planning and Park Directors
- 1400 miles - 700 miles is what they can afford. Doesn't take into account Rebuild Indy dollars. The ~~proj~~ current Rebuild Indy projects on top of the plan priorities.
- Steering Committee (IndyGog, Health by Design - others interested in COMPLETE STREETS).
- Pedestrian Plan - wasn't tied to funding. - Nearly 7000 miles in ped. plan
- ~~Indy~~ IndyMPO.org - Bike plan
- Scoring criteria and RESULTS are included in back of document
- GIS Form - Jeremy can get us GIS layers if we need it.
- Process was a year
- Policy Recommendations - steering committee felt very strong about those.
- Tried to err on the side of providing seperated facility - more users.
- Included a section on ride opportunities for getting to some organized ride.
- MULTI-MODAL LINK PAGE ON WEBSITE

CENTRAL INDIANA TRANSIT PLAN

LONG RANGE



INDY CONNECT
CENTRAL INDIANA'S
TRANSPORTATION INITIATIVE

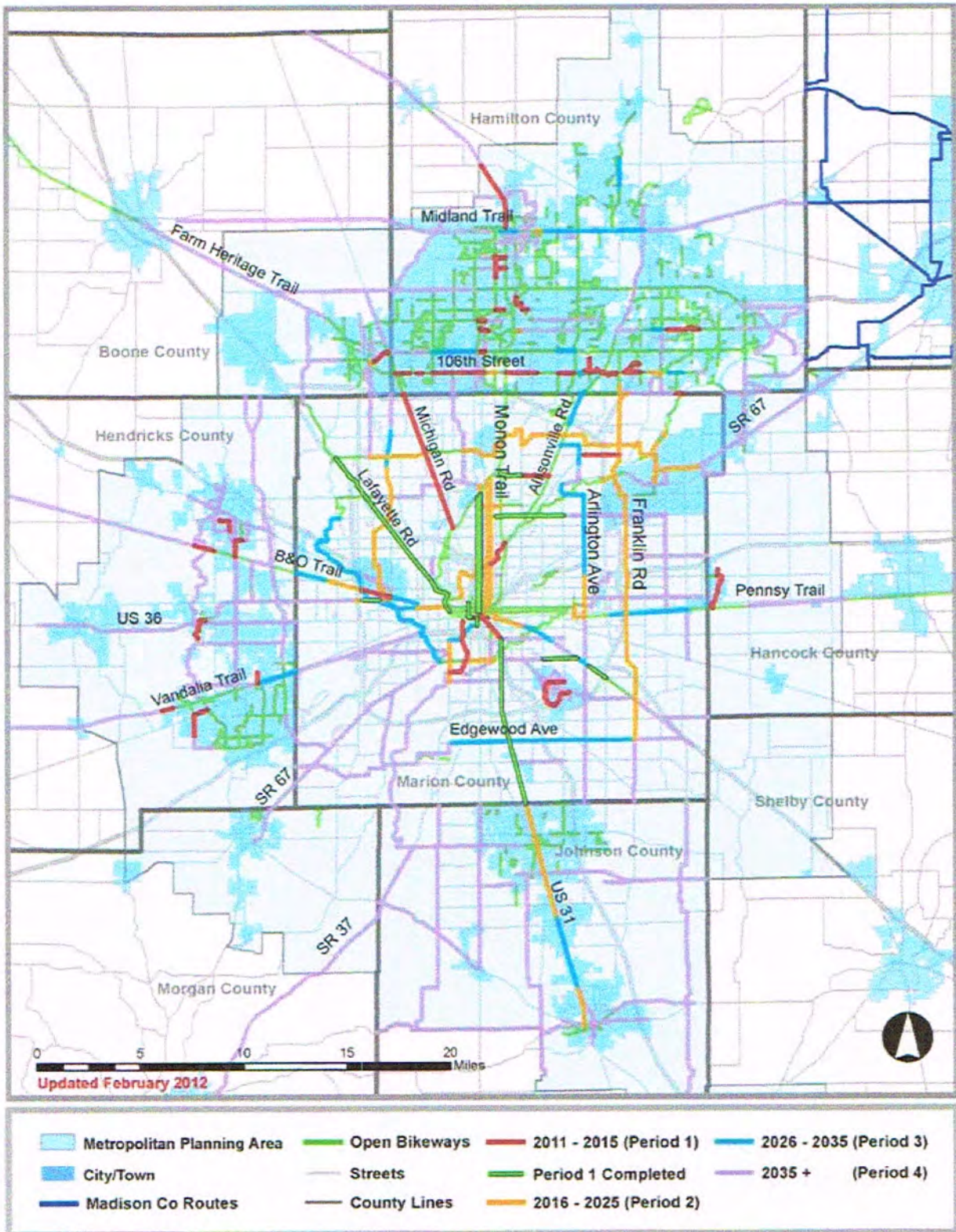
THIS IS A PLANNING LEVEL MAP
Specific alignments of transit lines as well as the number and location of stations will be determined in detailed corridor studies with significant public involvement.

- RAPID TRANSIT LINES**
BUS RAPID TRANSIT OR RAIL TRANSIT
- BLUE LINE
 - RED LINE
 - PURPLE LINE
 - ORANGE LINE
 - GREEN LINE
 - FUTURE LINES

- BUS NETWORK**
MULTIPLE BUS TYPES
- EXPRESS BUS
 - FUTURE EXPRESS BUS
 - HIGH-FREQUENCY BUS
 - ENHANCED LOCAL BUS
 - CIRCULATORS
 - FUTURE CIRCULATORS

- LEGEND**
- INTERSTATE
 - COUNTY LINE
 - TRANSIT CENTER
 - TRANSFER STATIONS
 - STATION STOPS
- NOTE: STATION STOPS SHOWN FOR ILLUSTRATION ONLY. LOCATIONS TBD

Map 5.1 Plan Recommendations





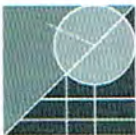
coordination NOTES

Group: Andrew Hart (KIB Forestry)
Attendees: but was meeting as a resident and dog Sulu?

Date: January 16, 2013
Location: Boulevard Station

MEETING NOTES:

- Lives in Watson-McCord neighborhood - Lives in yellow house just south of 30th Street.
- KIB Urban Forestry - Pogues Run - done a lot of work there
- Bikes to work on Monon
- Bikes to Skiles Test on Fall Creek for recreation.
- Done some work on Pogues.
- Has also used White River and Canal towpath, but not as much.
- Uses the system to bike quite a bit.
- Notices quite a bit of police on Monon - feels safe except after dark.
- In summers - his crews are on trail watering 300+ trees.
- Would like to see more lighting on Monon - especially south of Fall Creek (at night).
- Supports 24/7 access trail - he's a commuter.
- Commuting is an important issue - wants trails regulated like roads.
- State Fair is talking about enhancing campground at the Fair train bridge | campground.
- Recommends more landscaping along trail. KIB can provide free trees.





coordination NOTES

Group: Indianapolis Parks Foundation
Attendees: Lori Hazlett
Jenni Burroughs Burrough
Ron Taylor, Scott Siefker
Date: January 16, 2013
Location: Boulevard Station

MEETING NOTES:

- Gave brief overview of who we were and the master plan process.
- Talked about purpose and timing of master plan
- Raising money for trails - One of their directives.
- Received \$7.3 million in Lilly funding. Trails are always an initiative - how can they get plugged in. Asked when they will have some ideas on what they can raise funds for?
- Send dates for public meetings
- When foundation funds trail projects, they are more involved in the administration of the project. - Obligations to funders.
- Some parks are getting trails as part of the Lilly money.
- Discussed access issues
- What would be useful for Foundation:
 - Biggest "seller" is connectivity and living part
 - Trail more than the trail - opportunities for play, learning
 - ↳ opportunities above and beyond just trail use
 - "Experience" versus "workout"
 - Cost versus number of users it touches - this type of data always helps them when they talk to donors.
- Suggested trying to get in



JENNY BURROUGH
COMMUNITY AFFAIRS DIRECTOR
JBURROUGH@INDYPARKSFUNDATION.ORG
PH. 317-860-3253
FAX 317-637-7804

615 N. ALABAMA STREET SUITE 110
INDIANAPOLIS, IN 46204



WWW.INDYPARKSFUNDATION.ORG



INDIANAPOLIS
PARKS FOUNDATION



LORI A. HAZLETT
FUND DEVELOPMENT AND GRANTS DIRECTOR
LHAZLETT@INDYPARKSFUNDATION.ORG
PH. 317-860-3252
FAX 317-637-7018

615 N. ALABAMA STREET SUITE 110
INDIANAPOLIS, IN 46204

WWW.INDYPARKSFUNDATION.ORG



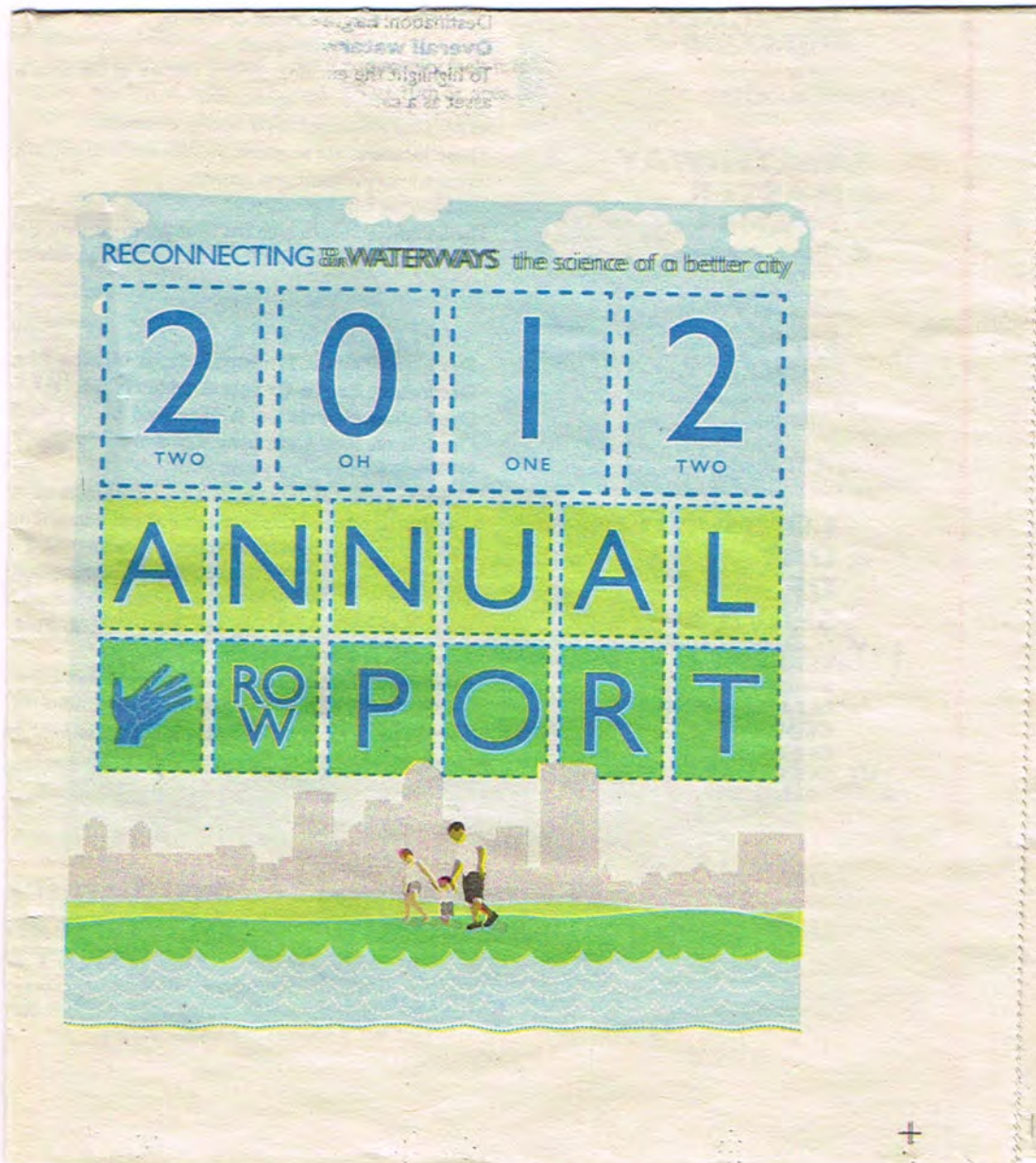
coordination NOTES

Group: *Reconnecting Our Waterways*
Attendees: *Annual Meeting*

Date: *January 18, 2013*
Location: *Indianapolis Art Center*

MEETING NOTES:

Resources on File:



hen

to Our Waterways formally began in
d has quickly gained momentum.
i ongoing initiative.

hy

y.

ave worked hard to better connect
hoods and the community to the
our waterways. Now is the time to
ll of that energy, projects, and passion.

her, we can leverage our time, talent,
vestment to reclaim one of our city's
. This community-wide focus will
environment, boost economic
and create a higher quality of life for all.
will benefit exponentially over time.



**NOW IS THE TIME.
Come ROW with us!**

For more information on
how you or your organization
can get involved visit

OurWaterways.org

or e-mail info@OurWaterways.org.



**RECONNECTING
TO OUR WATERWAYS**
the science of a better city





coordination NOTES

Group: DPW- Greenways Maintenance
Attendees: Jonathan Gick
Ron Taylor
Scott Siefker
Date: January 30, 2013
Location: Boulevard Station

MEETING NOTES:

- At one time, Greenways had 4 full-time staff and additional interns.
- Under Greenways group, Jonathan worked with a lot of volunteer groups on maint-related projects - wonders if there is anyone at the City people can contact for these types of service projects.
- There needs to be a defined point person for Indy Greenways.
- Greenways has never really had "programs" - self programming.
- Jonathan gets lots of questions that he really shouldn't be answering. He usually refers people to Andre.
- Jonathan thinks the City needs someone in Greenways with "feet on the ground." (referring to a full time position).
- DPW took over maintenance 3 or 4 years ago.
- Maint. for Greenways use to have ONE MANAGER - all that he did.
 - Used to have 18 people - 7 days/week.
 - Now have 9 people - 5 days/week.
 - Now, 90% of time on Monon, only core functions on other gways.
 - He expressed that he believes the public perception is that the Monon is the Cadillac and the other greenways are escorts.
- Jonathan also covers maint. on District 7 parks (south of Washington)
- Group of 10 - only do greenways
- Since they have tree trimming machine, his staff also clears brush along streets.
- Budget - their budget often is used by September.
- Snow removal - when it snows, his people are diverted to clear streets. They then will begin on Monon - response time is usually one day. Monon gets plowed because it is a commuter trail. Others are not, so they don't get plowed.
 - Old equipment is a huge issue.
 - Staffing is always a challenge.



- After snow events, Monon is always first - then White River.
 - Fall Creek is hard to plow because it meanders. Flows end up tearing up the turf.
 - Beginning to get pressure to plow Eagle Creek, but because it's not completed yet, it's not a commuter trail.
- Maintenance - there needs to be money designated for Greenway maint.
- Doesn't feel there are expectations for snow removal - there probably needs to be a formal policy put into place.
- Snow does get plowed despite budget cuts.
- Thinks there needs to be maintenance guidelines | policies | priorities in place.
- Current maintenance on Greenways:
 - Grass removal
 - Snow removal
 - Debris | leaves - blower - only on Monon and only when needed.
 - Graffiti removal
 - Trail issues (chuckholes, broken benches)
 - Flower beds (pruning, etc.)
- New amenities need to be easy to replace.
- Believes communication between planning, design, and maintenance staffs are essential.
- No formal priorities in place for graffiti removal. Typically they use the following to prioritize removal:
 1. Sexual content
 2. Racial content
 3. Phone numbers
 } Formal policy | expectations should be developed.
- What he sees the most in terms of graffiti:
 - most is Latino gangs
 - SUR 13 gang tags
 - Juggalo and Juggets (Insane Clown Posse) south of Washington St.
- Mowing - Monon - 4 guys 5 days per week during mowing season.
 - Not mowing other trails - use contractors. Once mowing season is over, maint. reverts back to DPW.
 - Greenways required to be mowed once per week. Once heavy rains and initial growing season is over, then once every 2 weeks. Contractors are also resp. for collecting litter in the sections they mow.



coordination NOTES

Group: DPW- Greenways maint.
Attendees: Jonathan Gick (cont.)

Date: _____
Location: _____

MEETING NOTES:

- For branches over 3" or illegal dumping, Contractors call in DPW.
- Blowing debris - other trails only when REALLY NEEDED.
- Contractors are not responsible for trail surfaces. DPW attends to this when needed.
- DPW will roll Canal Towpath in Spring, but Citizen's Water takes care of all other maintenance.
- DPW doesn't touch White River Greenway through downtown State Park property.
- DPW does try to replace benches when they are broken.
- Trash cans - need to be able to turn them over.
- Once they know about an issue on the trail, it is a liability issue and they have to address it.

What would he like to see come out of the Greenways Master Plan:

- New trail development needs additional maintenance resources (bodies, budgets, machinery)
- Strong lines of communication between all departments involved with the greenways.
- Policy expectations (standards) for greenway maint.
- Maintenance guidelines - specific
- Additional resources for maintenance.

• Also noted that he feels call boxes are maint. intensive. Should consider removing - vendors called out often to fix. 6 total on Monon. He is tasked with checking them each week.



• As a user, ~~he~~ he would like to see Monon open 24 hours.



coordination NOTES

Group: Pedal & Park | Bicyclelist | User
Attendees: Tom McCain

Date: January 30, 2013
Location: Boulevard Station

MEETING NOTES:

- Director of Pedal and Park
- Was part of original group that lobbied for Monon- Hoosier Rails to Trails
- As a basic system, it's good. Connectivity is still needed.
- Last two years, have parked 5000+ bikes each year.
- Sees growth in family and recreational users. That's the population that will be served by all of the connectivity.
- Has seen new walks on 71st Street near Binford.
- Broad Ripple Park - main drive off of Primrose - could do a bicycle boulevard all the way down to ~~Prim~~ 42nd - connection from neighborhoods to Park.
- Plano, Texas - trail at ~~Utility~~ ^{only} would need a light at Kessler.
- Has ridden most of Greenway ^{or example.}
 - Monon great
 - Canal Towpath is nice
- Amenities: Restrooms needed. (especially on south side) - Every 5 miles?
 - Connection between Towpath and White River trail has always been a problem. Sometimes - Riverside park connection would be nice - uses that to get to south White River
- Maintenance is an ongoing issue - Pleasant Run has lots of glass, stolen signs, other issues. Coke Plant area is bad - difficult to know where you are to go.
- Orientation at 10th Street @ Servaes Bridge needs improved.
- Eagle Creek would be a great priority - ~~the~~ connections to Speedway would be good.
- Pedal and Park - Boulevard Station hard to maneuver trailers.
 - Pedal and Park is mobile - no real needs other than a little open space.
 - ~~started~~ Greenways was a partner with P&P.
 - Officially a partner of Bicycle Indiana.
 - State Fair - everyday 9:00-8:00pm





coordination NOTES

Group: Friends of White River
Attendees: Kevin Hardie
Ron Taylor | Scott Siefker
Ben Jackson
Date: November 21, 2012 (walk-in)
Location: Boulevard Station

MEETING NOTES:

White River Clean up event in 2013

Been going on 25 years

Last 10 years, mostly done by Public Works and Friends of White River

Usually done in April

State Park is taking an active role this year. Allowing staging.

KIB Great Neighborhood Clean up. Program

Citizen's is involved

Concern - How will April event impact the construction project?

• South of Washington St to Raymond Street

Get lots of dumping - construction debris, monitors/TVs, litter (wash off roadways)

Deliberately limit # of people now because they have to bus people to the site.

FOLLOW UP:

✓ Who can he talk to to coordinate construction with event

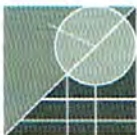
Friends of White River. org

Offered to take us out on the River - get a different perspective.

Kevin Hardie - offered institutional knowledge

Cell # 371-9418

Friends of Whiteriver@yahoo.com



• Have maps available on their website - River and access points - 8 1/2 x 11"

Ron Taylor

To: Kevin Hardie
Subject: RE: Thanks!

Was nice to meet you as well. I look forward to speaking with you more. Have a great holiday!

Ron

From: Kevin Hardie [<mailto:friendsofwhiteriver@yahoo.com>]
Sent: Wednesday, November 21, 2012 2:26 PM
To: rtaylor@TSWDesignGroup.com
Subject: Thanks!

nice meeting you today, appreciate the info and interest in some of past history of greenways as it relates to White River and its tributary streams. will be in touch again soon!

Keving Hardie
Executive Director
www.friendsofwhiteriver.org



coordination NOTES

Group: Hoosier Mountain Bike Assoc.
Attendees: Paul Arlinghaus - HMBA
Ron Taylor | Scott Siefker
Ben Jackson
Date: November 21, 2012 2:00 pm
Location: Boulevard Station

MEETING NOTES:

- Town Run was a former ATV/motorcycle trails
- HMBA actually worked with property owner to get easements for recreation - then worked for Indy Parks to take over
- Volunteer maintenance for Town Run - flooding, debris removal
- Parks define Town Run as a special use park. Need to define whether Town Run is part of the greenway system or a park.
- Would like to have night time use - Town Run has hosted a night time race in 2012.
- Hours - during winter, they discourage people from using trails when muddy. - Push them to
- Connectivity - Can't ride to Town Run (Fall Creek will connect to Fort Ben)
- Southwestway Park - more elevation - 3 miles built. Have about 3 more miles under design. Going through NEPA process. RTP grant.
- Ben thinks a bigger discussion is needed about how Town Run fits into the greenway system.
- People DO ride bikes to Town Run. From Broad Ripple, users take Monon to 62nd St. to Keystone T's into Kowals, then takes River Road
- Parking is issue in summer time.
- There is a connection north on Hazeldale - People north have better access to Town Run than Indy residents.
- Town Run south - Recreational easement (owned by Central Indiana Land Trust)
- All Town Run properties are under recreational easements
- Rogue set of trails on other side of river, but his organization has no affiliation with those properties. Access is from area behind B&E.
 - Doesn't want the mountain biking issue to get lost in this project.
 - Many cities beginning to coordinate mountain bike "skills" areas that can be dropped into normal parks. Start thinking about "Bike-based recreation" or "bike parks."



Hoosier Mountain Bike Association (continued)

- Consider if there are areas where single-track trails can be included. Users can jump off, ride trail, then jump back on path.
- Thinks there is an indoor BMX Facility on the east side.
- Paul's group - 400 members (state wide, but core is here in Indy)
 - Mission - Advocate for mountain bike - educate users
 - Have by default turned into a trail building organization
 - can serve as match for RTP grants - Volunteer hours
- There may be connectivity / connections north of County line.
- Southwestway has horse trails - some ~~hike~~ horse-horse, some horse-bike, some all three.
- No real security issues - once in awhile you hear about cars getting broken into at Town Run, a little more at Southwestway. The more people using, the less trouble / crime.
- Encouraged to stay in touch and follow the project.



Mark Reynold
Town Council President

Town Hall
11501 East Washington Street
P.O. Box 29155
Cumberland, IN 46229-0155

P: 317.894.0257
F: 317.894.6214
tcd4@town-cumberland.com
www.town.cumberland.in.us

coordination NOTES

Group: Town of Cumberland
Attendees: Mark Reynold - President,
Town Council
Ron Taylor
Date: January 9, 2013
Location: Boulevard Station

MEETING NOTES:

- Kessler Blvd. - Why no trail?
- Pennsy - Carol Road - want to develop a major trailhead - parking, old lumber shed
- Have an ad hoc group working on connection between Greenfield and Cumberland.
- Have purchased utilities for trail.
- Hancock Co. Commissioners are supportive, but no clear leader
- NHRT.org (Greg Midgley) - County by County Master Plan
- Sections being built in Ohio
- Branding
- Website
 - Third TP wrong - Cumberland's trail ends in Marion County at German Church Road
 - "Cumberland Pennsy"
- Focus needs to be on completing MAIN Pennsy line, Counselor is buying ~~Greenwood~~ ROW along German Church Road.

trying to)
- Map - symbols are backwards (proposed to existing)
 - not showing Cumberland as historic district
 - missing Cumberland portion of built trail
 - not showing town boundaries
- Also building a trail (3 miles) north from Pennsy to almost I-70 (Buck Creek)
- Transit - major bus stop (Meijer) store. Most heavily used bus line in the city

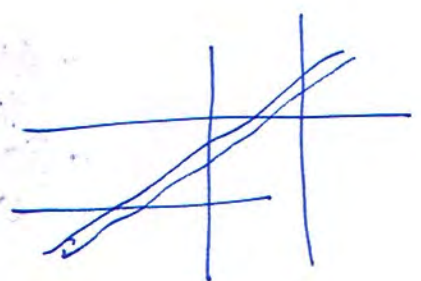
TAYLOR
SIEFKER
WILLIAMS
design group



M. Reynolds (Cont.)

- Scaled model of solar system begins @ German Church
 - First 6 planets in Marion Co.
 - Meets testing guidelines
 - Go to town of Cumberland Website to see panels (BFS, CBA)
- Cumberland has their own design standards
- NHRT requests that their logo be used in additional
- Park behind meyer or at transit stop -

• send link to survey.





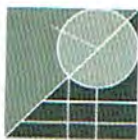
coordination NOTES

Group: _____
Attendees: Kevin Whited - Indy Cog
Pete Fritz - CIBA, Indiana State
Dept. of Health, Bicycle Indiana
Date: January 9, 2013
Location: Boleyn Station

MEETING NOTES:

Both serve on Indy Rezone Bicycle Task Force:

- May want to include some general goal language that addresses the mountain bike users.
- Plan should include some talk on how far mountain biking has come in the city - celebrate their success.
- Indy Cog 501 3c - 3 years - First couple of years they worked on adjusting the culture
- Have a bike parking program - Racks
- "Riders in the Know" - Bicycle safety program - Focus on specific intersections.
- "Bikes Belong" - program to help USC neighborhoods plan for bicycles.
- Lots of activists and advocates tasks.
- One of their big issues was the extension of hours on Monon - Pete thinks ~~there~~ there should be language in Greenways Plan about the hours. Kevin will send a copy of his research
- Pete - Casual cyclist - remove barriers - limited hours are a huge barrier
- Maternal instinct - "We know what's best for the city."
- Perception drives policy - fear drives the decision
- Winter plowing after second snow (First snow was GOOD, but not second)
Nothing north of 86th or south of 22nd.
- BUT - WHO MAKES DECISION TO PLOW.
- Could a group like Kevin's be contracted to clear the Monon?
 - Traverse City, MI uses Volunteers to clear their trails
 - Twitter feed called "Commuter Report" which
 - Adopted maintenance standards
 - Pavement management needed.
 - Fall Creek - Pavement getting rough for bikes.





coordination NOTES

Group: _____
Attendees: Whited/Fritz (continued)
Page 2
Date: _____
Location: _____

MEETING NOTES:

- Active living - connections to transit - increasing connectivity to greenways
- Kevin - Connectivity on West and South sides
- Kevin views the greenways as gateways to cycling
- Pete - cyclists will go out of their way to get onto a protected route
 - greenways are good for destination riding
- East-west cross traffic is needed - 71st
- Pete has seen same on Allisonville
- Greenways, cycletracks
- Kevin would like to see an analysis of pavements where trails meet end/bents of bridges
- Pete - Thinks route to Fort Ben is a barrier
- PJF - Cycling on south side - No good way North/South through Marion County.
- Are there any abandoned RPs on south side
- Mann Road is a southern gateway - gets a lot of cyclists - narrow, but needs a bike lane.
- Edgewood



Synscapes of IN
5935 E. 27th Street
Indianapolis, IN 46218
Marketing & Community Outreach Dir
cell: 317-435-4812
web: www.synlawn.com
email: lvavul@synlawn.com

Lorraine Phillips Vavul
866-204-1372
fax: 317-545-1333

LANDSCAPE PETS GOLF PLAY ROOFDECK

coordination NOTES

Group: Mid-North Historic District/HUMI
Attendees: Historic Meridian Park.

Date: Lorraine Vavul
Scott Siefker - 1.9.13
Location: Boulevard Station.

MEETING NOTES:

- Wayfinding issues important. -

- Trail use along 30th St. → E/W to connect all users between Fall Creek Greenway and childrens museum. - even to canal towpath.

- Need access to trails from N'hood

POTENTIAL connections:

- Wilson Park bird sanctuary - connect to Moner Trail (S of 30th St.)
connect along Fairfield to 34th St.

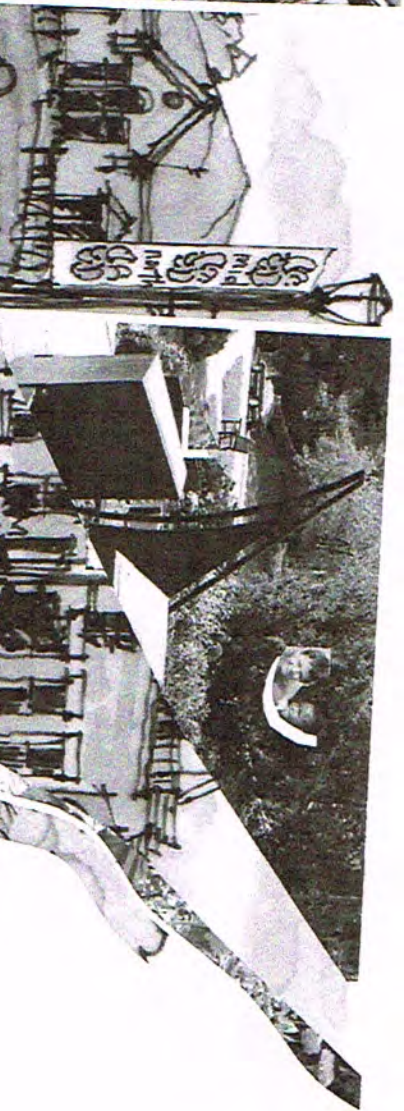
- 42nd St. - connection to Michigan/Canal towpath and Cemetery/
Crown Hill ↔ University - potentially then connect across @ 34th St. to Fall Creek pkway.

- Internal Loop

- Bike to sports park @ museum/winsona campus

- Perception of crime - biggest challenge re: implementing Destinal
for Fall Creek plan or ideas.





* Resource on File

CROWN HILL

HIGHLAND VICINITY

HISTORIC MERIDIAN PARK

MAPLETON-FALL CREEK

MERIDIAN HIGHLAND

WATSON-MCCORD

SIX NEIGHBORHOODS One Vision

Mid-North Quality of Life Plan
INDIANAPOLIS





MID-NORTH INDIANAPOLIS COMMERCIAL NODE STUDY

EXECUTIVE SUMMARY



What is a Commercial Node?

Urban design theorist Kevin Lynch defined “node” as:

“..... points within the city, strategically located, into which the individual enters (and which is often the main focal point to which she or he is traveling to or from). There are often junctions – a crossing or converging of paths (and) often have a physical element such as a popular hangout for the individual or a plaza area”

For purposes of this study, a successful urban commercial node has the following characteristics:

- A concentration of commercial activities - such as shopping, dining and business services,
- A mixture of destination and locally serving businesses,
- An area with strong pedestrian accessibility and connectivity, and
- An area used often by nearby residents that fosters social interaction.

* RESOURCE ON FILE

Why Commercial Nodes?

Clusters of business activities and leisure destinations have driven a considerable amount of recent urban investment. Residents choosing to live in central city areas often seek neighborhoods that have close access to a variety of shopping, dining and entertainment options. Many of these neighborhood commercial areas feature pedestrian oriented “main street” environments that host concentrations of small, independent businesses.

The Mid-North community once had a large collection of urban commercial nodes where residents could obtain a wide range of goods and services. Shifts in demographics, growth centers and market trends over the past half century led to the decline of these neighborhood centers. Today Mid-North residents are prepared to combat this decline and foster neighborhood commercial centers in appropriate areas. The 2012 Mid-North Quality of Life Plan identified the need to: **“prioritize commercial centers for focused development activities that have the greatest ability to increase population density”**.



coordination NOTES

Extraordinary. Always.

Group: Mapleton-Fall Creek
Attendees: Nicole Martinez-LeGrand
Kelli Mirgeaux
Ron Gilbert
Date: January 9, 2013
Location: Boulevard Station

MEETING NOTES:

- Oversee Mid-North area of the neighborhoods - includes Destination Fall Creek
- Interested in our process, how community can be involved
- Stressed connectivity issues (or lack thereof) in their neighborhoods.
- What about the economic dev. impact of trail development.
- DCI just completed, commercial node study re: nodes that could impact/connect to greenway system.
- Really liked the "cycle track" concept in Fountain Square.
- Bicycle Boulevard - potential on 28th St.
- **NODES** → connections to greenways.



Mapleton-Fall Creek
Development Corporation

Kelli Mirgeaux
COMMUNICATIONS & OUTREACH COORDINATOR

130 East 30th Street
Indianapolis, IN 46205
www.mfcdc.org

317/923-5514, ext 6
Fax 317/923-2139
kelli@mfcdc.org

TAYLOR
SIEFKER
WILLIAMS
design group





coordination NOTES

Group: Admin. Neighborhood Services
 Attendees: Dennis Papenmeier
Gary Loveless
Ron Taylor, Scott Siefker
 Date: January 10, 2013
 Location: Dennis' office

MEETING NOTES:

Coordination on Public Meeting Dates and locations. Chose the following:

February 19- Mayor's State of the City Speech

<u>PIKE</u>	<u>2/19 2/25 20</u>	<u>Feb 20</u>
<u>WASH</u>	<u>2/20 21</u>	<u>Feb. 21</u>
<u>LAWRENCE</u>	<u>2/21 25</u>	<u>Feb 25</u>
<u>WAYNE</u>	<u>CENTER 2/26 27</u>	<u>CENTER - Feb 27 WAYNE - Feb 26</u>
<u>WARREN</u>	<u>2/28</u>	<u>Feb. 28</u>
<u>DEC</u>	<u>2/22 25 5</u>	<u>March 5</u>
<u>PERKY</u>	<u>3/6 6</u>	<u>March 6</u>
<u>FRANKLIN</u>	<u>3/7 7</u>	<u>March 7</u>

Need to have:

- Script / Talking Points (timeline, public meeting, talking comments etc)
- Email Flier / talking points
- Need talking points COB Monday
- Dennis will ~~setup~~ send us names
- Date, time, location
- Dennis will have his staff get back to him next week about availability and locations

COB MONDAY - FLIER / ADVERTISEMENT

COB FRIDAY - Dennis will send us names





coordination NOTES

Group: Jamison Hutchins
Attendees: Ron Taylor
Scott Siefker
Date: January 10, 2013
Location: City-County Building

MEETING NOTES:

- Jamison has been working with Brownfields Redevelopment @ DMD
 - Steven Meyer - DMD (lawyer)
 - Coordination on funding and land acquisition
 - NACTO Road Show in Indy in June
- Jamison's target audience: Bicycle commuting
- IUPUI students did a study about businesses/economics along cultural trails.
- HUB|DOT|EPA - doing a case study on Cultural Trail
- Connectivity Plan
 - Rebuild Indy probably a once in a lifetime level of investment
 - New York|Mich. - TE Grant - first
 - Then Allisonville - then Lafayette Road - Then Shelby-Madison
 - Have heard a lot ~~ab~~ from the South Side about wanting more bike facilities
 - Illinois and Capital next.
 - ~~Wants~~ Mayor wants everything done
 - Line item in budget for each of next 3 years
 - Eagle Creek Greenway - mayor really wants it done - \$13 million project
- ~~is~~
- Bike boulevards
- Repairing projects - Green projects - working with a vendor now on completing an interactive new checklist
 - Complete streets
 - Lilly built a new bike hub on McCarty



• March 4-6 Bike Summit - Washington DC

• Jamison's thoughts:

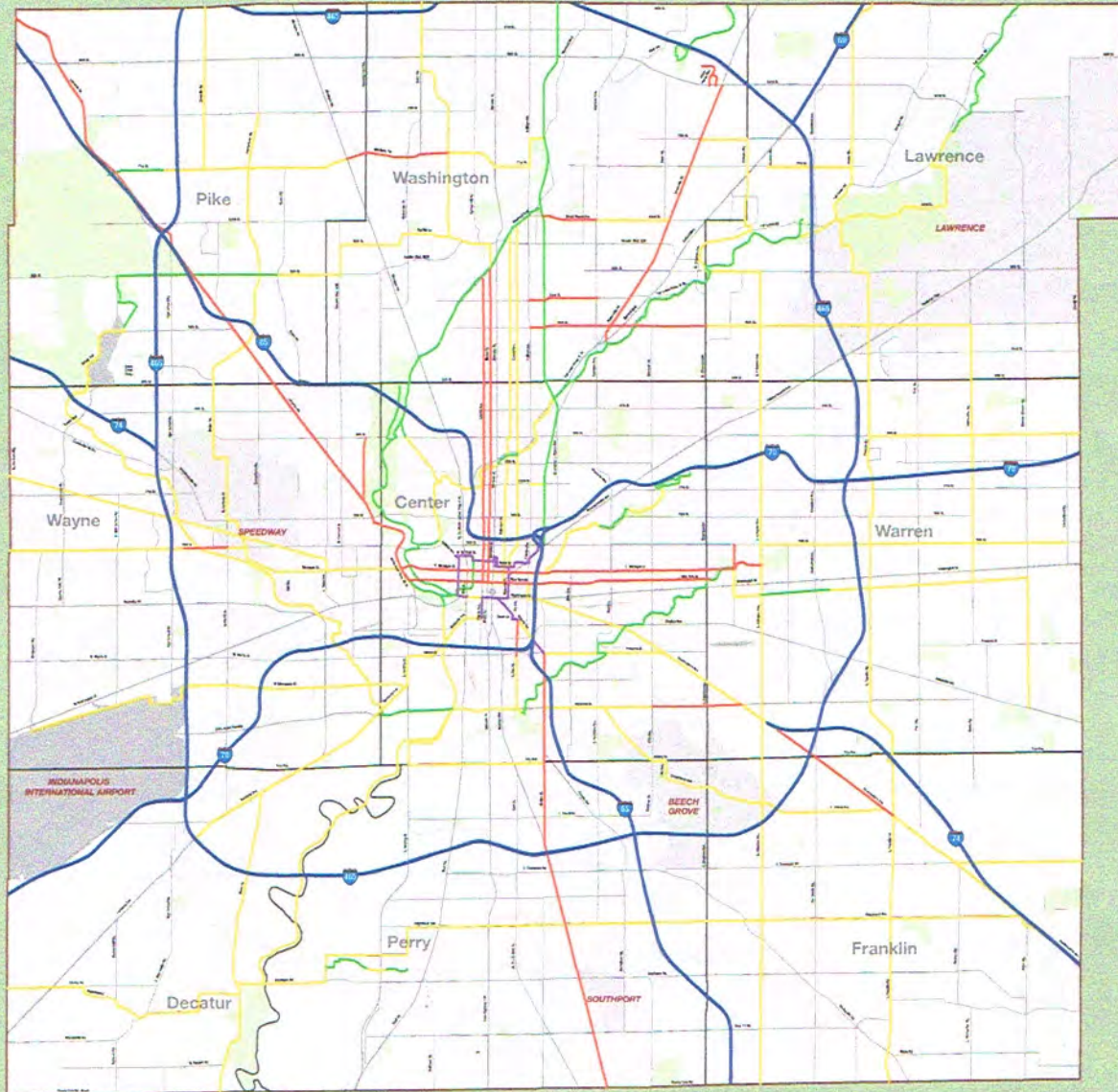
- Need improvements to existing system before expansion
- 30th Street @ Canal for example
- Fall Creek at 38th
- Connections - to on-street facilities
- Upcoming Wayfinding (taking down the ^{existing} route signs)

ON-STREET AND GREENWAYS ~~ARE~~ ARE ~~NOT~~ VIEWED AS A SINGLE SYSTEM!

Jamison has talked to Mayor about coming to project office - maybe when it warms up.



City of Indianapolis Current Bikeways Plan



Legend

BIKEWAYS 2011

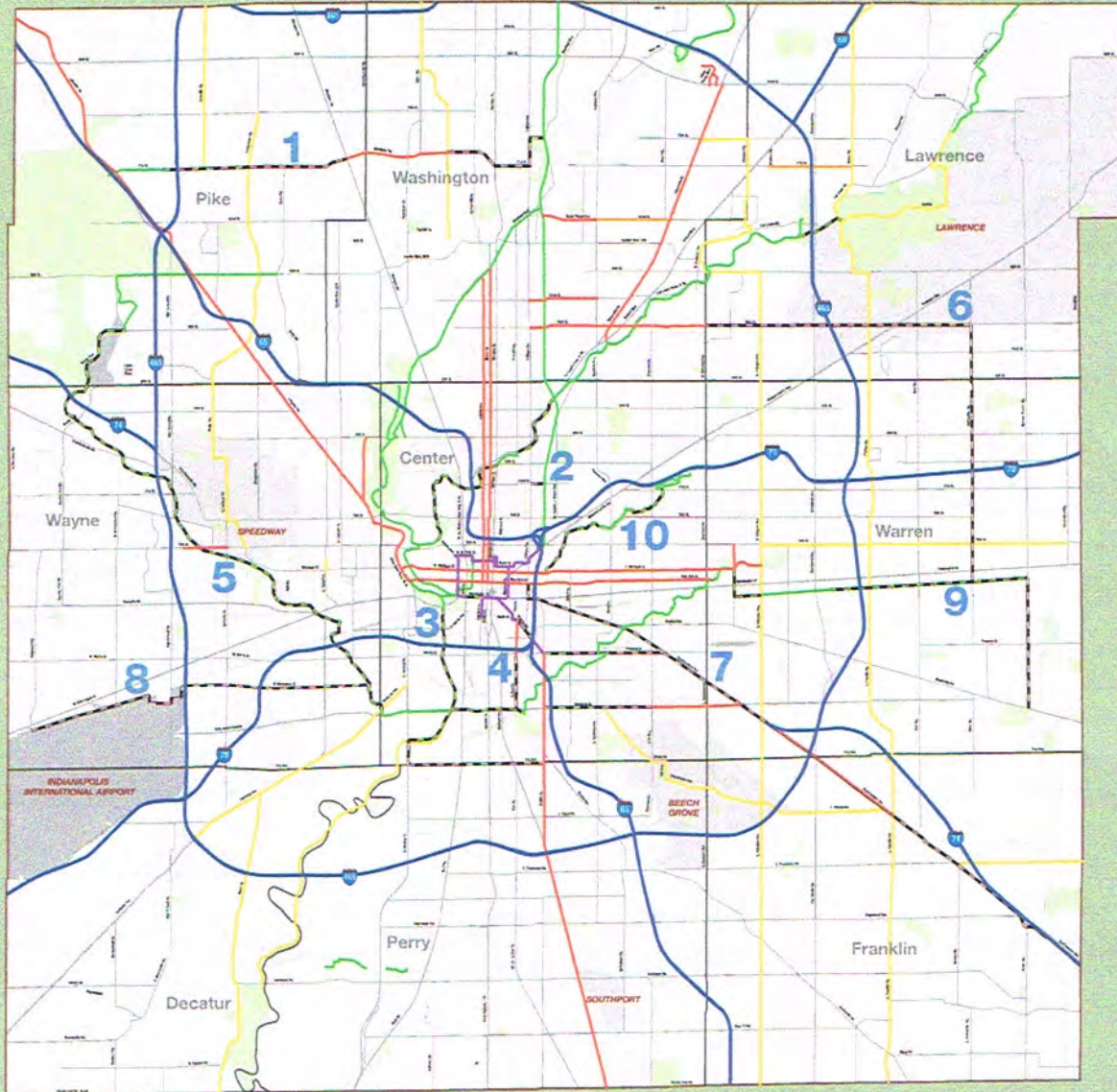
- Greenway
- Bike Way
- Culture Trail
- Future Connectivity Routes

GENERAL SYMBOLOGY

- Major Street
- Local Street
- Railroad
- River/Reservoir
- Major Stream
- Parks
- Excluded Cities
- Airport
- Township Borders



City of Indianapolis Connectivity Plan 2012 - 2015



Legend

BIKEWAYS 2012-2015

- Greenway
- Bike Way
- Culture Trail
- - - Planned Greenway Trail
- - - Planned Bike Way
- - - Planned Culture Trail
- Planned Multi-Use Trail
- Future Connectivity Routes

SPECIFIC PROJECTS

- 1 71st St. Bikeway - In Design
- 2 Fall Creek Trail - Monon Trail to Central Ave. - Funded for construction
- 3 South White River Greenway - Funded
- 4 Cultural Trail - 2012 Construction
- 5 Eagle Creek Greenway - DES 2012 / CN 2013
- 6 48th St / Millholler - DES 2012 / CN 2013
- 7 Southeastern Ave. / Prospect - DES 2012 / CN 2013
- 8 N. Perimeter Rd. / Raymond St. - DES 2013 / CN 2014
- 9 Pooey Trail / German Church Rd. - DES 2013 / CN 2014
- 10 Pogues Run Greenway - DES 2014 / CN 2015

GENERAL SYMBOLOGY

- Major Street
- Local Street
- Railroad
- River/Reservoir
- Major Stream
- Parks
- Excluded Cities
- Airport
- Township Borders



coordination NOTES

Group: Sustain Indy
Attendees: Ashley Mvas
Ron Taylor
Scott Siefert
Date: February 6, 2013
Location: Boulevard Station

MEETING NOTES:

- Ashley's area of focus is parks, open space, and waterway.
- Have 6 different "element teams" - further divided into Waterway teams
 - have \$10,000+ for each waterway.
- Has heard the priorities for Greenways:
 - Eagle Creek - part of Mayor's loop.
 - Pogues Run
 - Pleasant Run (Coke plant - working on CICE fund for Pleasant)
 - Probably need to talk with Jamison about exact "Loop" routes.
- Greening the Crossroads Plan - would like to use SILTY as more of a resource.
- Area north of Eagle Creek listed as endangered. (Traders Point, Fishback Creek)
- Check out LUCY tool that they used as part of that plan.
- Fall Creek - New trail going in, upper connector to Fort Ben Barton Park West, Bridge construction
 - Dying landscape on south side of ~~main~~ creek
 - Looking to do a master plan so when groups approach them they have a plan.
 - Convergence of Fall Creek and canal - connection to 16 tech area import.
- Has talked with Land Stewardship group - Chrytal suggested we talk with her.
- Pete Wenzel - contract to mow greenways
 - Oversees no mow areas
- ROW CHAIR
 - Specific leaders for each waterway (also have a public ally [Americorps] and a community leader
 - Steering Committee meetings every month (First Friday of each month)
 - should plan to meet with Waterway leaders at the early stages of the development of recommendations.
 - Bird Indy - identifies nearly 50 locations across City for special birding initiatives.



Ashley Mraz (Page 2)

- Check the Greening the Crossroads Master Plan for a southern route.
- Anna looking forward to hearing what we're doing. Try to make sure we meet with her.
- Currently looking at south side of City County Building - connection to Transportation Hub.



coordination NOTES

Group: Meridian-Kessler Neighbors
Attendees: Helping Neighbors
Clark Kahlo
Ron Taylor
Date: February 13, 2013
Location: Boulevard Station

MEETING NOTES:

- Expressed concern about the "economic development" aspect mentioned in the Public Meeting announcement. Explained what is meant. He doesn't want to see the Greenways overrun by commercial development. Were intended to be natural - an escape from development.
- Inquired about the role of the Greenways Development Committee.
- Art to Art trail along Canal - opposed. Formed local group called "Save our Scenic ~~Canal~~ Central Canal" to promote leaving the canal more natural. Citizen's Water supported the group - made statement that they wouldn't allow art on their property.
- Public input must be part of the Greenways Plan! - I explained our public outreach strategy.





coordination NOTES

Group: IMPD
Attendees: Steve and Tom

Date: February 19, 2013
Location: Boulevard Station

MEETING NOTES:

Two IMPD cars in parking lot when I arrived. Had a conversation with one of the officers, Steve. They are assigned to patrol Monon every Tuesday morning until 11:30. When weather is nice, they ride bikes from 10th St. to 91st. When weather is bad, they usually park in the station parking lot.

Trail relatively safe in their opinion, with no real crime. Broad Ripple area sometimes will have people on trail at night after going out to the bars, and that really isn't safe. But for the most part, there aren't any real safety issues on Monon.

Usually 5 guys patrolling during summer.





coordination NOTES

Group: _____
Attendees: Ryan Wetson. - Resident
Scott. Ron

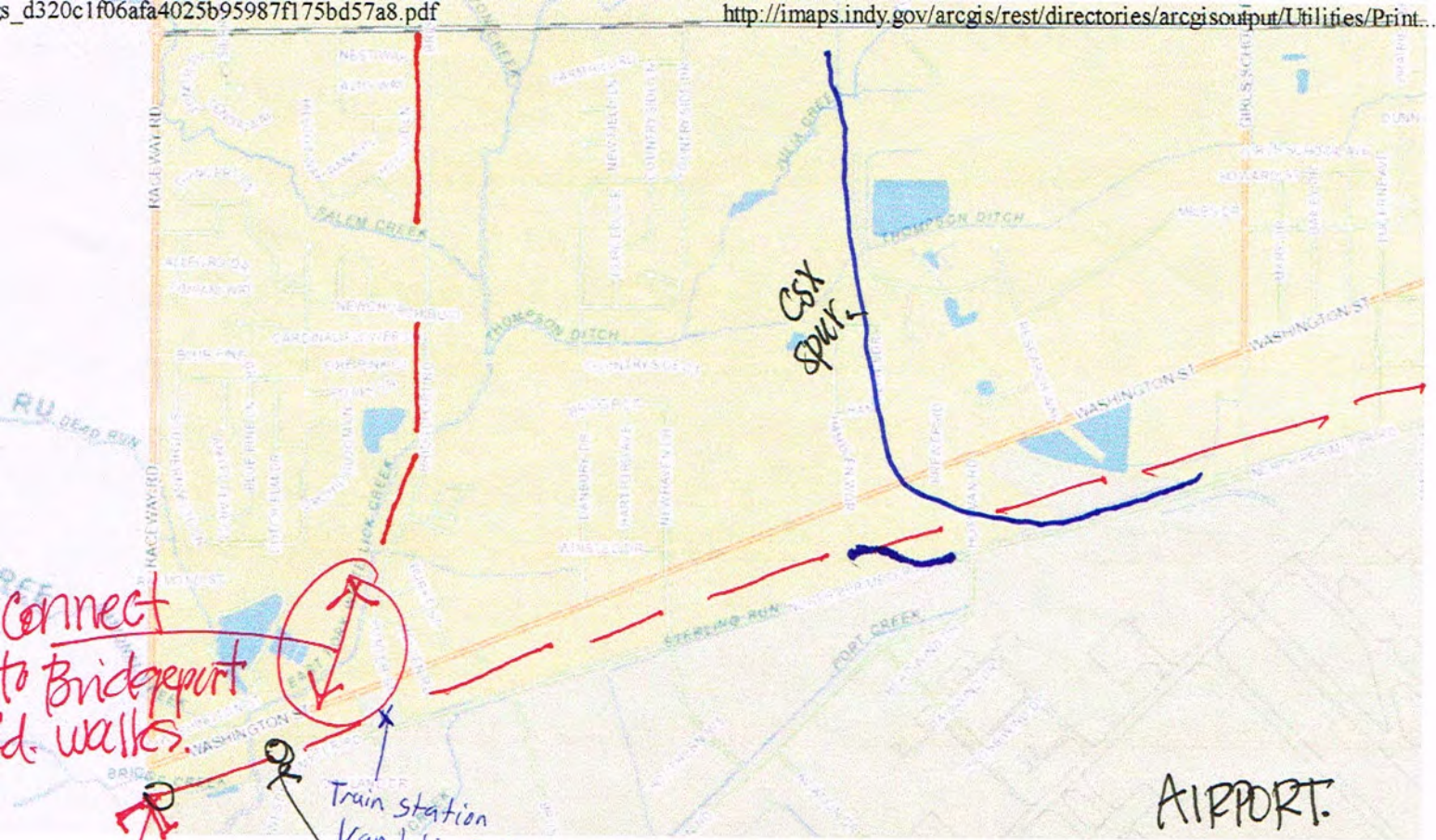
Date: _____
Location: Boulevard Station.

MEETING NOTES:

- Work with CSX - active line w/ shared-use trail.
- Vandalia RR north of Raceway - connect to Plainfield Aquatic Ctr
- South of Washington St. - connect to Bridgeport Road. - adjacent to East Fork White Creek. - Could connect to
- Connect town of Bridgeport. -
- Airport - North perimeter Road sitting on old Vandalia line. - would it be possible to use that alignment for path?
- Activate the old Railroad Bridge along Vandalia. -
- A lot of residents who car so there is a need to provide other alternative modes of recreation/walking/transportation.
- If you have to drive to a trail - defeats purpose. Need to connect.
- Connect to Bridgeport (sidewalks then to trail) then
- Trail would compliment neighborhood area that has many vacant lots etc.
- Provide opportunities for small vendors/shade/small structure. - Need some rest areas w/ simple benches. Maybe engage w/ food trucks/vendors.
- Opportunity to engage from the Railroad Bridge w/ good views/vista of downtown.
- PACE air-freight. - owns parcels over Row in Hendricks Co. can they preserve easement



- Big Four Hobbies in Plainfield. → Railroad history of the area & lines.
- ~~the~~ Lunhurst & Minnesota. - width of, consider wide enough for trail.
- ☐ Ronald Reagan parkway. - old telegraph pole along the Vandalia line.



Connect
to Bridgeport
& walks.



Train station
Vandalia RR

Bridge @ White Lick Creek. good vista of downtown!

Vandalia National Rd. trail

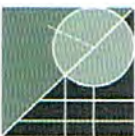


coordination NOTES

Group: Health by Design
Attendees: H by D committee
Ron Taylor, Scott Siefker
Date: 3/18/13
Location: MIBOR offices.

MEETING NOTES:

- Ron gave overview presentation on the Greenways Master Plan
- OPEN FORUM DISCUSSION:
 - ① Maintenance - example Pleasant Run - issue w/ cracks in trail or general accessibility issues on all trails
 - ② Can amenities be added to greenways? Example - Restrooms needed.
 - ③ Can we share survey info. of our vined organizations? (Answer-yes!)
 - ④ INDOT/maintenance controls? By definition the greenways are defined as recreation by INDOT. Can we further define these as a transportation system - more of a "transportation venue"? The challenge will be to balance the recreation & transportation components.
 - ⑤ Need to make sure the Indy Greenways plan connects to the other larger plans/initiatives (i.e. Indy Connect)
 - ⑥ Will the plan address standards/guidelines to begin to balance other segments/corridors? (i.e. balance treatment/design of Monm vs White River, Fall Creek etc?)
 - ⑦ Balance equity of investment between the northern townships vs. southern townships - plan should address this.



- (8) Discussed opportunity to coordinate w/ IndyPerone to institutionalize greenway development in under developed areas
- (9) Where does your masterplan begin? Does it stop current projects? Example - extension of Fall Creek to Ft. Ben? This connection will make the bike path / commuter extension happen and be much safer.
- (10) Any improvements happening to Upper Fall Creek trail? OR the re-route of Fall Creek @ 30th St. to St. Fairgrounds?
- * (11) Fitness & health aspects of this plan is all driven in ACCESS & CONNECTIONS. For the plan to be able to aid the health benefits, the plan must prioritize all means of access & connections - provide opportunity for all users.
- (12) Identify neighborhoods or areas w/ limited or no connections to at least make note of needed connections.
- (13) Bike lanes are scary w/ people walking on them. TPW not addressing all users. - can this plan address this challenge/issue?
- (14) Address EQUITY for all users - demographics, & invest in areas that are underserved.



coordination NOTES

Group: Keep Indianapolis Beautiful
Attendees: KIB staff, Ron Taylor, Scott Siefker
Date: March 17, 2013
Location: KIB offices

MEETING NOTES:

- TSW gave overview presentation to KIB staff at one of their weekly staff meetings
- General conversation following the presentation included discussion on:
 - environmental balance of greenway corridors
 - connections
 - identification of new routes as part of this plan.





coordination NOTES

Group: Hoosier Rails to Trails
Attendees: Richard vonnequut
Mario Vian
Amy Williams
Date: 3-20-13
Location: Boulevard station

MEETING NOTES:

1) B & O RAILROAD -

- Race Way, Girls School Rd, High School Rd - Existing schools, bus routes, road width, etc. These need sidepaths in the long term plan to create "branches" or seamless connections between B & O and community. Connections on the greenways are critical for function of system.
- look at connection between High School Rd and Eagle Creek. A trailhead is needed here.
- Bridge over Eagle Creek on B & O is needed now. Make the bridge the driver of building other sections of the trail. Today bridge would be to "no where" but could easily connect to walk on east side of Eagle Creek and this could put pressure on other sections to develop. There are also grade/elevation issues in some areas along this section (RR grade is above residential houses) that could cause privacy issues. Plant evergreen trees today so that when trail is built, you have mature evergreen screen for neighborhood.
- B & O is needed for economic development and transportation. City should use land acquisition tools to get land.
- Near West (Haughville, Hawthorne, Stringtown, We Care) - There is an unused bridge ~~next~~ at 16th street. Also on CSX property between end of proposed B & O route and Kessler, there is a high crime rate b/c of lack of maintenance by CSX. This CSX property is not being used & poses public health concern. Also if CSX decided to use it, RR would likely need to be rebuilt (to run trains).



2) PEORIA & EASTERN RAILROAD -

- A portion of this line has been removed between Clermont to just east of Polco Road. The land needs to be reassembled for a trail. The alignment could wander around Eagle Creek to the tunnel under I-465. Indiana DNR Bicentennial Nature Trust funding could be used. Program has \$22M (1:1 match) to buy land. Bob Branson (within div. of outdoor recreation) is the contact. Grants are limited to \$300k / project but project could be broken into multiple projects and could work with city, Speedway, B&O board, etc.

3) PENNSY -

- Very necessary within Ind.!
- National / International Bike Route (USBR 35) - Route is currently on 21st b/c Pennsy is not complete. Washington is not a safe alternative. Then route turns on German Church which is not ideal b/c very narrow / high traffic. German Church is weak link but has potential for larger N-S connection if re-built, should include sidepath. Trail head @ German Church / Pennsy needed.
 - Need "branches" for seamless connections.
 - If Pennsy is done, could include it in USBR 35 route!
- Need to slow traffic at Arlington & Washington.

4) OTHER -

- Mario feels Pogue's Run & trail near Martindale should be priority b/c serving low income areas.
- Richard is willing to sit on committee, etc to help w/ Peoria & Eastern land acquisition.
- Suggested talking w/ Molly Trublood (LISC) to make aware of connections. Could be good partner.



coordination NOTES

Group: Central Indiana Land Trust
Attendees: _____

Date: March 27, 2013
Location: Boulevard Station

MEETING NOTES:

- = Way to work w/ Mt. Pike organization re: River Road access? bridge will be needed. They (Central Indiana Land Trust) own the property on S. side of I-465.
- = Will the routes be altered (from what was shown) on previous master plans? - Specifically in Pike township??
- = Part Remison w/ NPS helping CILTrust w/ review on greenway/blueways in Central Indiana - Specifically White River & Fall Creek Eagle Creek & Williams Creek.
- = Been working w/ neighborhood groups in Millersville re: Reconnecting to waterways as part of 'Greening to Crossroads' / KIB initiatives (on private property cleaning issues)
- = Had program to do 3-years maintenance/no-mow/plantings in an area but the neighborhood that was impacted wouldn't let it happen.
- = Would like to see floodplain restoration in some areas (i.e. Fall Creek) but recognize that Fall Creek neighbors & assoc. (destination Fall Creek) want to see more development. What is the balance? What is the best investment for the neighborhood.



= Have struggled to get anything in the ground -

- = within Marion County - priorities are Ft. Ban & Eagle Creek and the corridors that connect them to the White River.
- = would see Eagle Creek from Zionsville to Park also as a high priority.
- = How do we blend conservation value w/ functional (people/transp.) value. Both provide opportunities for connectivity & eco-system growth instead of small pockets or environs. (land/water/animal)
- = White ~~lake~~ ^{river} conservation area @ Wolf bridge @ keystone - (by Flemings Steakhouse) will be taken over by Cent. Ind. land trust. There is kayak access there & an easement for Greenways to use (this ~~is~~ ^{is} ~~an~~ ^{an} ~~acc.~~ ^{acc.}?)
Currently, it's all bush honeysuckle, they plan to clear & provide that access.
- = they will own from Towne Run to S. of Bluffs St. w/ Greenway easement. Pl. developers owns 2 areas that they don't, but ~~will work~~ are in talks w/ them to sell. OLIVERS Woods nature preserve - S. Towne Run Park.
- = White River demonstration site - biological / commonsense conservation. - 465 to River Rd. Have grant \$ to do restoration, but don't own property yet to complete project.
- = Indianapolis Binding Trail - White River is a part of this. - want to expose this w/ access + parking etc.
- = The AC. parcel donated by KITE as mitigation for the BGI wetland fill donated to City as what happens to this? BGI Bike trail all over the place here.
- = want stretch to be attractive - will have to work w/ pl. re: narrow area of planting/ restoration area.
- = "Dual-Use" corridors → people ^① side, & plants, animal, water ^② inter-agency coord. ^(prio) important

plan vs. maintain vs. plant (KITE) vs. organize...



coordination NOTES

Group: Central Ind. Land Trust
 Attendees: Continued pg. 3.

 Date: _____
 Location: _____

MEETING NOTES:

- Central Indiana Land Trust — continued.
- ⇒ VU Tech & consultant working w/ ILS, Lilly & Parks on the Fall creek restoration. - Challenge has been w/ interagency coordination & how we move project forward.
 - ⇒ Central Ind. Land Trust. - was involved w/ Reconnecting our waterways but haven't been emailed re: meeting times for the Ecology sub-committee, so they're not engaged. Not sure how overall mission is broadly focused - instead of just focused on the economic dev. issues.
 - ⇒ Would selling an Easement in the 9th St. bridge area generate \$ for C.I.L.T. & provide dedicated access/path for the greenway? Bridge over Camel Creek would be needed.
 - ⇒ open to talking w/ parks about greenway in this area.

Barry Russell - Easement on NW side of 96th Street.

Scott Siefker

From: Cliff Chapman <cchapman@conservingindiana.org>
Sent: Thursday, March 28, 2013 1:57 PM
To: rtaylor@tswdesigngroup.com; ssiefker@tswdesigngroup.com
Subject: White River Greenway on north side

Ron and Scott,

Thanks again for taking time to meet with Don Gorney and I yesterday. I chatted with my Executive Director, Heather Bacher, about the idea we were tossing around yesterday regarding the Greenway possibilities on the White River above, below and across our Oliver's Woods preserve and she was very interested in the idea.

We would like to pursue this idea further if you all would.

All the best,
Cliff

Cliff Chapman
Conservation Director
Central Indiana Land Trust
1500 N. Delaware Street
Indianapolis, IN 46202
317-631-5263 x113 (o)
317-525-3329 (c)
www.conservingindiana.org





coordination NOTES

Group: Marian University Students
 Attendees: Caleb Colby
Ron Taylor

Date: April 10, 2013
 Location: Boulevard Station

MEETING NOTES:

- Working with Lake Sullivan Park – Doing a school business class project and their project is figuring out how to build a trail connection to Lake Sullivan Park from Marian University. Lots of questions about costs and process. See attached agenda.

Meeting Agenda

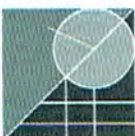
A-Team

10 April 2013

Indy Greenways Design Group

- Introduction of the A-Team
- Introduction of the Client
- Our trail hopes and design
- How can the Design Group help us?
 - Can you design a trail for us?
- Financial Analysis for a path-
 - Ballpark figure
- Procedure for City to build the path
- Timeline for City
- Timeline for 10 year plan
- Contact Information
- Questions

TAYLOR
SIEFKER
WILLIAMS
design group





coordination NOTES

Group: Pedal 3 Park | Broad Ripple residents
Attendees: Tom McCain
Bon Taylor
Date: April 17, 2013
Location: Boulevard Station

MEETING NOTES:

- Had met with us earlier concerning connections to Broad Ripple Park, most notably a bicycle boulevard along Primrose.
- Wanted to make sure we knew of the idea about creating a cantilevered Riverwalk between Park and Broad Ripple. Said early concepts by Ray Irvin kept walk along River all the way to the Canal.



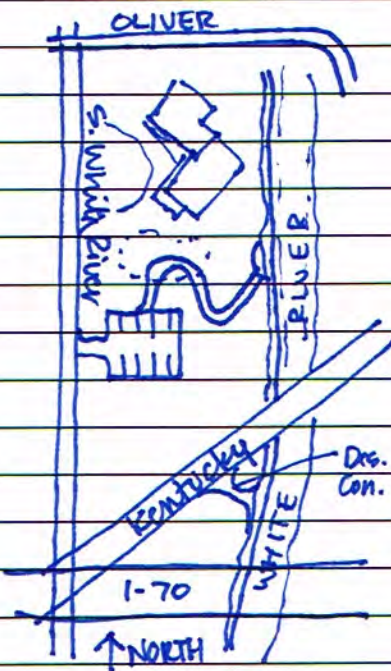


coordination NOTES

Group: West Indy CDC
 Attendees: Beth Gibson - WIDC
Jeff Gearhart - WIDC
Ron Taylor Ken Rumenschneider - RAI
 Date: Brandon Schreeg - RAI
 Location: Boulevard Station 4/17/2013

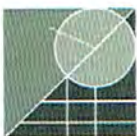
MEETING NOTES:

- Group was interested in talking about South White River Greenway and Eagle Creek - WIDC service area sits in this area and I gave an update on the planning for both corridors.
- Particularly interested in the new White River Greenway portion under construction. They have a project at the Key School site which is along the River between S. White River Parkway, Oliver Avenue and Kentucky. The school is IPS. Their project would create a new detention area with open space for the school. They would like to include a new DIRECT access the greenway and provide parking for a new TRAILHEAD. Their connection would provide direct access between the school and greenway.



- Plan to use TIF money to construct, but needs Indy Parks support
- Would like to meet with Indy Parks to show them the plans.
- Part of R.O.W.
- This piece of property used to belong to Indy Parks but was given to IPS several years ago.

- My assessment is that this project would be very positive for the White River Greenway and be a good access point for residential areas cut off by 1-70 and future GM stamping plant redevelopment.





1 Platform



2 Concrete Ramp with Railing



3 Metal Overlook Platform/Landing



4 Mowed Path through Meadow



coordination NOTES

Group: Irvington Terrace Neighborhood
Attendees: Vishant Shah
Ron Taylor
Date: April 24, 2013
Location: Boulevard Station

MEETING NOTES:

- Was his second visit to office - following up after public meeting.
- Gave him an update of what we heard at Warren Township meeting.
- Talked about Irvington Plaza. They feel this has the potential to be the new center of their neighborhood and feel that to make that a reality, they need to find a way to tie it to both the Greenways and the BRT line.
- Connection between Pennsy and Pleasant Run - sees the merit of Ritter Connection to Ellenberger and thinks that the connection would be positive for their neighborhood. But he thinks commuters will want a more direct route. Any possibilities? Washington Street? Mentioned that he likes the cycle track on Shelby St. and would even welcome that type of connection.
- Liked the idea of Grassy Creek Greenway and liked the concept of linking the large regional parks.
- Asked how his neighborhood could help - told him it would be great if they could help identify connections needed along the Pennsy.
- Also asked whether we would have any materials for advance review prior to ~~the~~ June meetings - offered to provide feedback if we want it.
- Requested copy of Pennsy map for use in determining connections for us.

