



indy GREENWAYS • **full** CIRCLE
2014-2024 MASTER PLAN

APPENDICES



Department of Public Works
Indianapolis
Gregory A. Ballard, Mayor

TAYLOR
SIEFKER
WILLIAMS
design group



May 2014





table of **contents**

APPENDIX A: Public Meeting Presentation #1 - February / March 2013

APPENDIX B: Public Meeting Presentation # 2 - August 2013

APPENDIX C: Public Meeting Summaries

APPENDIX D: Public Input from Project Office

APPENDIX E: Greenways Planning Survey

APPENDIX F: Technical Sign Package





In February and March of 2013, nine public meetings were held throughout Marion County, one in each township. At each meeting, residents were asked to help identify critical connections, identify strategic goals for trail development and help develop potential routes within each township.

The first round of public meetings included:

- Wednesday, February 20 - **Pike Township** - Eagle Creek Salvation Army Community Center
- Thursday, February 21 - **Washington Township** - Park Tudor School
- Monday, February 25 - **Lawrence Township** - Heritage Christian School
- Tuesday, February 26 - **Wayne Township** - Speedway United Methodist Church
- Wednesday, February 27 - **Center Township** - Garfield Park Arts Center
- Thursday, February 28 - **Warren Township** - Education and Community Center
- Tuesday, March 5 - **Decatur Township** - Salvage Yard Church
- Wednesday, March 6 - **Perry Township** - Perry Meridian High School Library
- Thursday, March 7 - **Franklin Township** - Franklin Township Middle School West Annex

The following pages include the presentation made at these meetings. Brochures and FAQ sheets used to publicize the Master Plan in the early stages of the project have also been included.



what's it all about?



The Indy Greenways 2013-2023 Master Plan update is part of an effort to update the plan for the overall greenway system. This effort will produce the next generation of master planning for the system, identifying new trail development, targeting maintenance needs of the existing facilities, defining connections to the regional bike and pedestrian systems, identifying connections to the new on-street bicycle facilities, and prioritizing the system's development. This plan will also have a greater focus on economic development potential near and along the greenway and will seek to identify how the trails can aid in this new development. In the end, the plan will provide implementable steps for development of the greenway system over the next ten years.



need more INFORMATION



FOLLOW

To find out more about community meetings and other events, Like Us on Facebook or check out the website at:

www.indygreenwaysmasterplan.wordpress.com



MEET

Set up a meeting at the project office - open Wednesdays 8:30-4:30
Boulevard Station
East 38th Street at the Monon Trail



CONTACT

For specific questions regarding this planning effort contact:

greenways@tswdesigngroup.com





stay connected!



Want to stay informed on the plan's progress? Want to learn more about how the greenways connect our neighborhoods, provide venues for art and nature appreciation or how they provide an important transportation and recreation link for our city? Then check out the project Facebook page that we will be using over the course of the project to inform residents of progress on the project and seek input.

We really want to hear what you have to say about the development of the greenways in Indy!



share your STORY



Tell us what's important about the greenways and your vision for the future greenways system.

Name:

Thoughts:







looking ahead

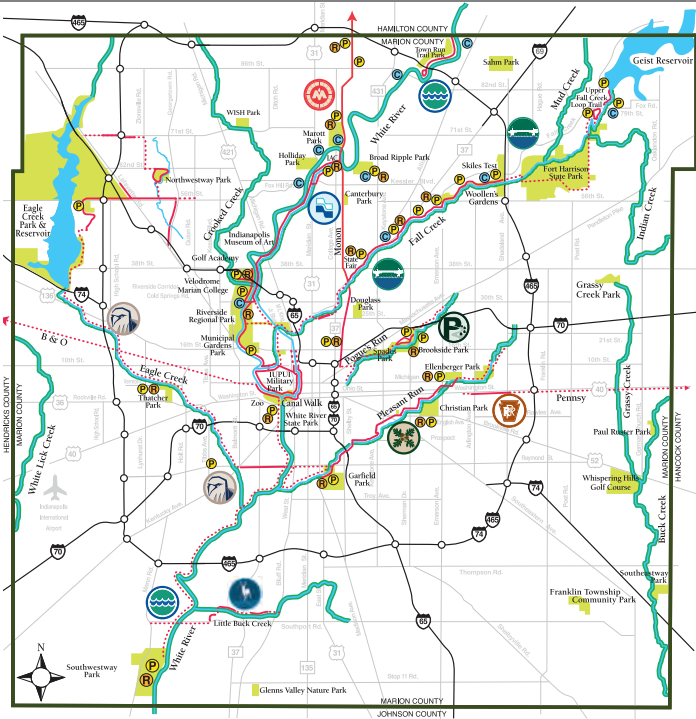


The Indy Greenways Master Plan needs to provide the “new blueprint” for the Indy Greenways system and how it fits into the context of all of the current initiatives underway in the City. It will need to answer the following questions:

- How can the greenway system provide both a functional transportation role as well as a recreational role?
- Where should future greenways be developed and how can they be connected?
- How can the greenways, blueways, bike lanes and other multi-modal facilities be better connected and function as a unified system?
- How do the greenways interface with public transit and future improvements to the community’s transit infrastructure?
- How can greenways foster economic growth?
- How can the greenways contribute to the perception of Indianapolis as a world-class city?



existing GREENWAYS



The Indianapolis Greenway System currently has over 60 miles of trails with over 2 million visits annually connecting people all over the city. With so many users, we need to effectively plan for the future to enhance and maintain our great system.



Questions that this plan need to answer include:

- How do you use the current greenway system?
- What do you see is needed to enhance the system?





FAQ's

Project Overview

The Indy Greenways 2013-2023 Master Plan update is part of an effort to update the plan for the overall greenway system. This effort will produce the next generation of master planning for the system, identifying new trail development, targeting maintenance needs of the existing facilities, defining connections to the regional bike and pedestrian systems, identifying connections to the new on-street bicycle facilities, and prioritizing the system's development. This plan will also have a greater focus on economic development potential near and along the greenway and will seek to identify how the trails can aid in this new development. In the end, the plan will provide implementable steps for development of the greenway system over the next ten years.

Frequently Asked Questions

Q. What is a Greenways Master Plan?

A: The master plan is a document that helps to clearly identify costs and priorities for the development of the greenway segments. Driven by public engagement, it provides an opportunity for the City to understand the desires of residents and to align appropriate funding with those priorities. The Greenways Master Plan will look at the City's trail and greenway system and identify critical issues, needs, improvements to the existing system and new trail development. It will outline priorities for improvement and implementation over the next ten years.

Q. How long is the planning effort?

A: The Master Plan is a 12-month planning process. The first portion of the project deals with the existing system and issues associated with the greenways. It also includes a public input component to discuss the existing system as well as future needs. The second portion of the project will identify improvements and additions to the system. The plan will be complete by October 2013.

Q. How will this study tie into other City initiatives?

A: The greenways master planning effort will look at how the greenway system coordinates and works with many of the other initiatives in Indianapolis including the on-street bicycle lane network, public transit, waterways, neighborhood centers, and areas for potential redevelopment. The plan will examine how the greenways can best compliment many of these efforts and be part of an overall unified system of bicycle and pedestrian connectivity in the City.

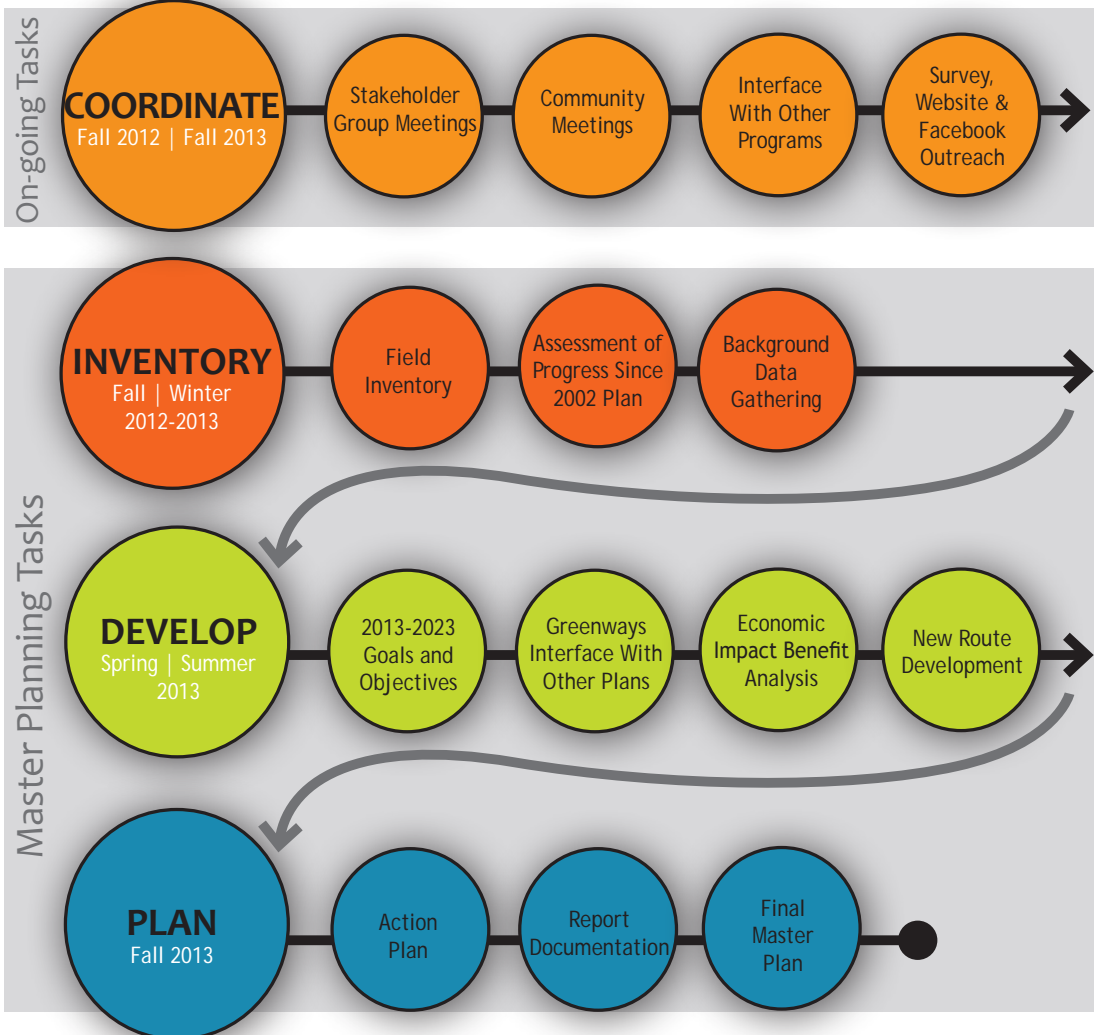
Q. Will this plan identify new trail and greenway development?

A: Yes, this plan will identify areas where new trail development can expand the existing network of trails and provide access to a greater number of Indianapolis residents. It may also suggest new connections to other portions of the bicycle and pedestrian network, new facility development, or other trail-related improvements needed for the system.

Q. How long will it take to get new trails developed?

A: The master plan will identify new trail segments, costs, and priorities for development over the next ten years including short-term implementation as well as long-term goals.





Q. How can I be involved in the planning process?

A: There are many ways to be involved with the project. Get updates, view project materials, and provide input on the project website at www.indygreenwaysmasterplan.wordpress.com. Visit the project Facebook page for current news, announcements, and to take part in the ongoing dialogue on greenway issues. A user survey has been developed to get input from users on many of the issues facing the Indy Greenways system. Stop by the project office and talk to project planners. The office is located at Boulevard Station, the former rail depot at the intersection of the Monon Trail and 38th Street and is open on Wednesdays from 8:30-4:30. You can also attend the community meetings. A series of public meetings will be occurring early in 2013 to collect input from the public.

FOLLOW
To find out more about the project, Like Us on Facebook or check out the website at: www.indygreenwaysmasterplan.wordpress.com

MEET
Set up a meeting at the project office - open Wednesdays 8:30-4:30
Boulevard Station
East 38th Street at the Monon Trail

CONTACT
For specific questions regarding this planning effort contact: greenways@tswdesigngroup.com





Public Meeting 1:
THE EXISTING SYSTEM



TAYLOR
SIEFKER
WILLIAMS
design group
landscape architecture | community planning | urban design | housing | strategic planning



welcome &
INTRODUCTIONS



TAYLOR
SIEFKER
WILLIAMS
design group
landscape architecture | community planning | urban design | housing | strategic planning



welcome & INTRODUCTIONS

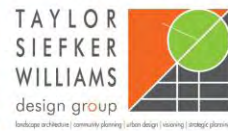
AGENDA- Public Meeting 1



- Project background
 - Early planning of the system
 - 2013-2023 Update
- Overview of Indy Greenways system
 - Overview of the Indy Greenways system
 - Greenways in the Township
- Master Plan Themes
- Instructions for open house



project BACKGROUND





project BACKGROUND

Early Planning for the Greenways



- 1885- John Charles Olmsted commissioned to create a formal parks and open space plan for Indianapolis

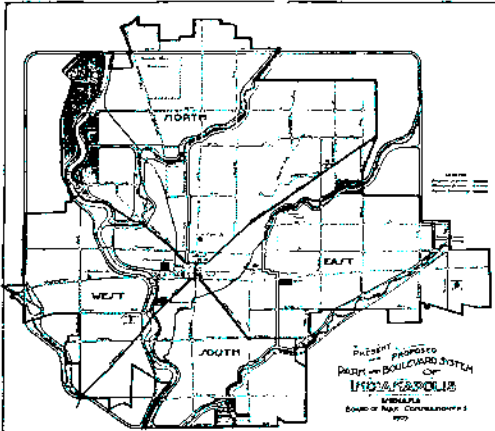


- 1905- George Kessler was commissioned to review that plan and make recommendations
- 1909- Result was the Kessler Plan



project BACKGROUND

The Kessler Parks and Boulevard Plan

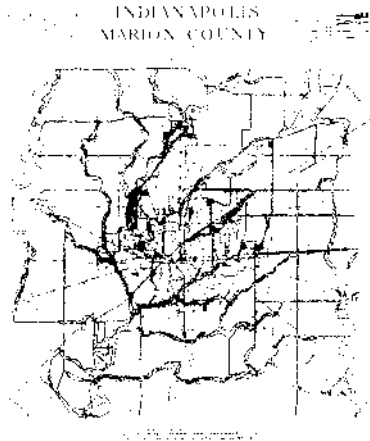


- Proposed a chain of continuous parks that would connect every neighborhood in the City.
- Encouraged preservation and protection of City's water courses for recreation purposes.
- 3400 acres now on the National Register.



project BACKGROUND

The Kessler Parks and Boulevard Plan

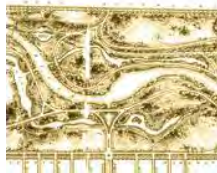


- After Kessler's death in 1923, Lawrence Sheridan extended the plan further to include all of Marion County.
- The Kessler Plan and Sheridan's plan is still the backbone of the Indianapolis Greenways System.



project BACKGROUND

The Indianapolis Parks and Boulevard Plan





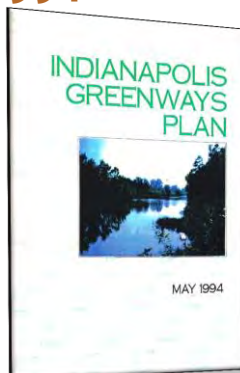
project BACKGROUND

The Indianapolis Parks and Boulevard Plan



project BACKGROUND

The Contemporary History- 1994 Indianapolis Greenways Plan

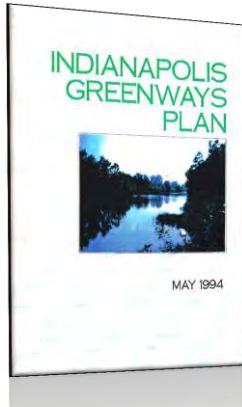


- Several City planning efforts in the late 1960s and 1980s reinforced the development of the Parkways into linkages.
- The 1994 Indianapolis Greenways Plan was the first comprehensive update to the Kessler Plan.



project BACKGROUND

The Contemporary History- 1994 Indianapolis Greenways Plan



- It laid out the vision for the development of the contemporary greenways.
- Identified 14 greenway and conservation corridors for the City.
- Set goal of 15 miles of trail per year.
- Established the contemporary foundation of Indy Greenways.



project BACKGROUND

The Contemporary History- 2002 Indianapolis Greenways Master Plan

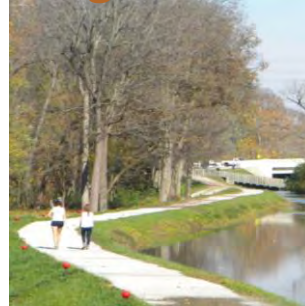


- Evaluated implementation of the system.
- Prioritized continued development efforts.
- Broadened the potential impacts and identified new funding strategies.
- Updated the City's approach to development of the greenways.



project BACKGROUND

In each of the plans, the City sought to...



ESTABLISH THE FRAMEWORK FOR THE SYSTEM Early Development
Build the Foundation of the Kessler System **INITIATE CONSERVATION**



project BACKGROUND

INDY GREENWAYS MASTER PLAN 2013-2023



COMMUTING Recreation **INTEGRATION** **ON-STREET BIKE LANES** **T.O.D.**
CONNECTIONS TO NEIGHBORHOODS **SUSTAINABILITY**
Wildlife Regional Bike and Pedestrian Plan **STREAMBANK RESTORATION**
ACCESS *Reconnecting to Our Waterways* **CSO-DEEP-ROCK TUNNEL**
ECONOMIC DEVELOPMENT **CULTURAL TRAIL** *How do the greenways connect to transit?*



project BACKGROUND

WHY PLAN?

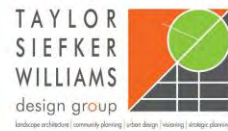
Coordinating existing initiatives and long-term vision.



- Existing projects
- Near-term projects
- Longer-term initiatives and vision

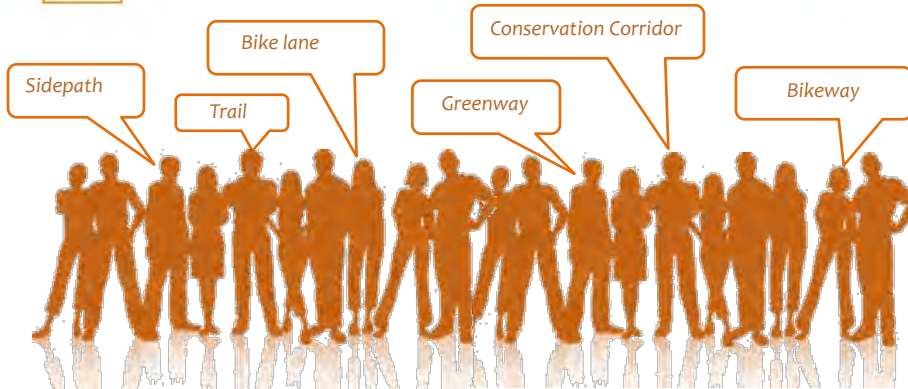


Indy Greenways OVERVIEW





Indy greenways OVERVIEW



What is included in the Greenways Master Plan? What is not?

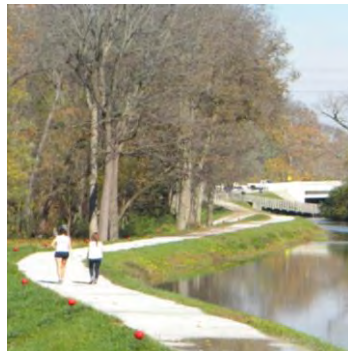


Indy greenways OVERVIEW

DEFINITIONS

Greenway...

A linear park that includes a shared-use path.



- Often parallel a waterway or use a continuous corridor such as an abandoned rail line.
- Path is intended for a variety of users: bicyclists, walkers, skaters, families.
- While often used for commuting, they have a **recreation, health and fitness** aspect as well.



Indy greenways OVERVIEW

DEFINITIONS

Greenway...

A linear park that includes a shared-use path.



- Indy Greenways are designate recreational corridors that fall under the **jurisdiction or management of Indy Parks.**



Indy greenways OVERVIEW

DEFINITIONS

Sidepaths/multi-use trails...

A linear shared-use path that isn't under the jurisdiction of the Parks Department.



- Often parallel roadways.
- Path is intended as a **connection** for a variety of users: bicyclists, walkers, skaters, families.
- In some cases they may look like a greenway trail, but they are actually part of the **street infrastructure.**



Indy greenways OVERVIEW

DEFINITIONS

Bike lanes / on-street facilities...

Designated on-street lanes for bicycles.



- Included on major street bicycle routes.
- Intended users are **experienced bicyclists**.
- Not intended for pedestrian use.

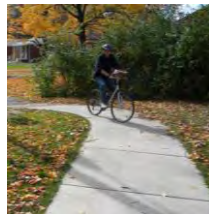


Indy greenways OVERVIEW

DEFINITIONS

Connections...

Any means by which someone accesses the greenways.



Can include **sidewalks, bike lanes**, or other infrastructure for both **pedestrians and/or bicyclists**.



Indy greenways OVERVIEW

DEFINITIONS

Bikeways...

Includes all types of bicycle facilities.

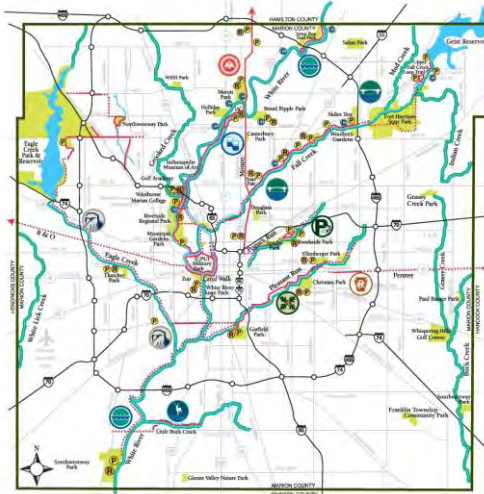


Generally describes any facility used by **bicyclists**.



Indy greenways OVERVIEW

INDY GREENWAYS SYSTEM...



- There are currently over 60 miles of greenways in place.
- Plans for nearly 200 miles in current plan.
- Currently 10 different greenway segments.



Indy greenways OVERVIEW

INDY GREENWAYS SYSTEM...



B&O Corridor

7.1 miles proposed



Monon Rail-Trail

Complete in Marion County- 10.4 miles



Central Canal Towpath

5.2 miles constructed, 3 miles planned



Penny Trail

2 miles constructed, 3 miles planned



Eagle Creek Greenway

3 miles constructed, 23 miles planned



Pleasant Run Greenway

7 miles constructed, 3 miles planned



Fall Creek Greenway

9 miles constructed, 5.5 miles planned



Pogues Run Greenway

2.3 mi. constructed, 3 mi. planned



Little Buck Creek Greenway

1.3 miles constructed, 2.1 miles planned



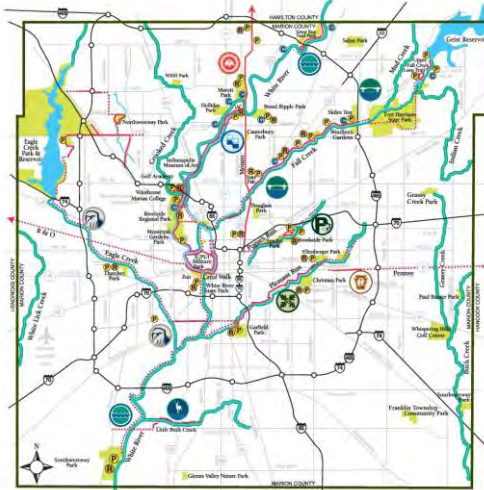
White River Greenway

7.3 miles constructed, 22 miles planned



Indy greenways OVERVIEW

THE EXISTING INDY GREENWAYS SYSTEM...



... A CLOSER LOOK
IN THE TOWNSHIPS



Indy greenways OVERVIEW

GREENWAYS IN PIKE TOWNSHIP...



GREENWAY SEGMENTS IN PIKE:

- Eagle Creek Greenway

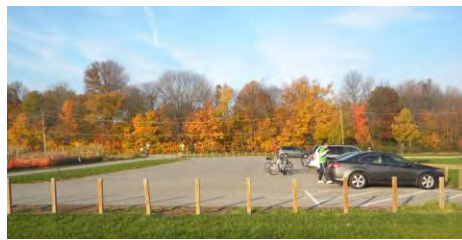
OTHER TRAIL-RELATED INITIATIVES:

- Pike Connectivity Plan
- Indianapolis Bikeways Plan
- Regional Bike and Pedestrian Master Plan



Indy greenways OVERVIEW

GREENWAYS IN PIKE TOWNSHIP...





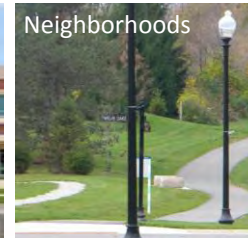
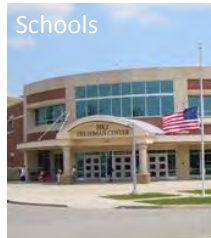
Indy greenways OVERVIEW

CONNECTIONS IN PIKE TOWNSHIP...



Indy greenways OVERVIEW

CONNECTIONS IN PIKE TOWNSHIP...





Indy greenways OVERVIEW

GREENWAYS IN WASHINGTON TOWNSHIP...



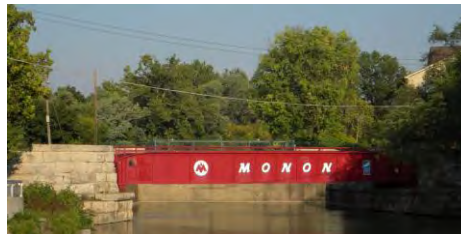
GREENWAY SEGMENTS IN WASHINGTON TOWNSHIP:

- Monon Trail
- Central Canal Towpath
- Fall Creek Greenway
- White River (future)



Indy greenways OVERVIEW

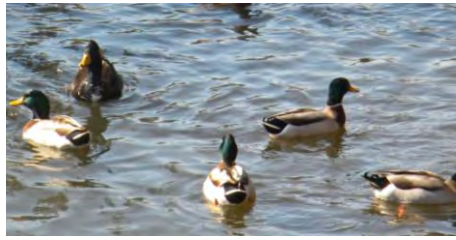
GREENWAYS IN WASHINGTON TOWNSHIP...





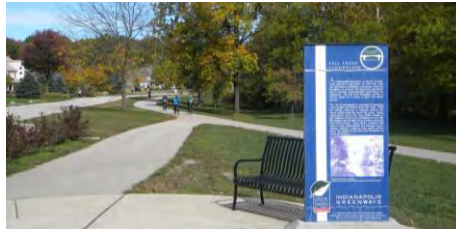
Indy greenways OVERVIEW

GREENWAYS IN WASHINGTON TOWNSHIP...



Indy greenways OVERVIEW

GREENWAYS IN WASHINGTON TOWNSHIP...





Indy greenways OVERVIEW

CONNECTIONS IN WASHINGTON TOWNSHIP...

Future Transit



Parks and Special-use Facilities



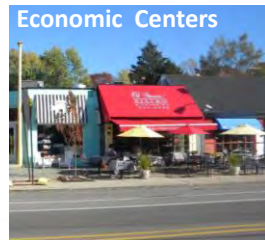
Bikeways and Bike Lanes



Schools



Economic Centers



Indy greenways OVERVIEW

GREENWAYS IN LAWRENCE TOWNSHIP...



GREENWAY SEGMENTS IN LAWRENCE TOWNSHIP:

- Fall Creek Greenway
- Upper Fall Creek Loop Trail
- Geist Dam Trail

OTHER TRAIL-RELATED INITIATIVES:

- Fort Harrison State Park
- Close proximity to Monon



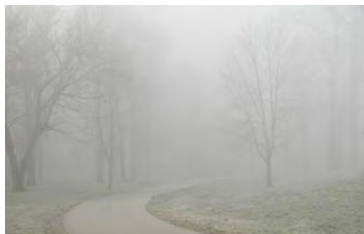
Indy greenways OVERVIEW

GREENWAYS IN LAWRENCE TOWNSHIP...



Indy greenways OVERVIEW

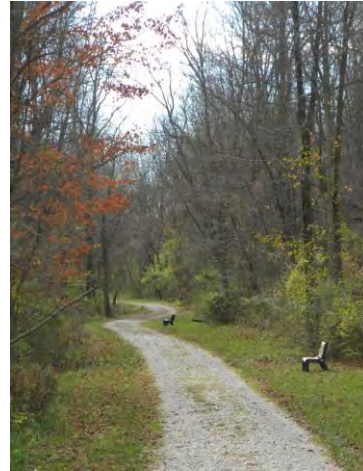
GREENWAYS IN LAWRENCE TOWNSHIP...





Indy greenways OVERVIEW

GREENWAYS IN LAWRENCE TOWNSHIP...



Indy greenways OVERVIEW

GREENWAYS IN LAWRENCE TOWNSHIP...





Indy greenways OVERVIEW

CONNECTIONS IN LAWRENCE TOWNSHIP...

Future Transit



Parks and Special-use Facilities



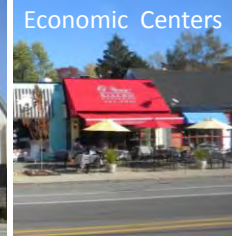
Bikeways and Bike Lanes



Schools



Economic Centers



Indy greenways OVERVIEW

GREENWAYS IN WAYNE TOWNSHIP...



GREENWAY SEGMENTS IN LAWRENCE TOWNSHIP:

- Eagle Creek (unbuilt)
- B&O (unbuilt)
- White River Greenway

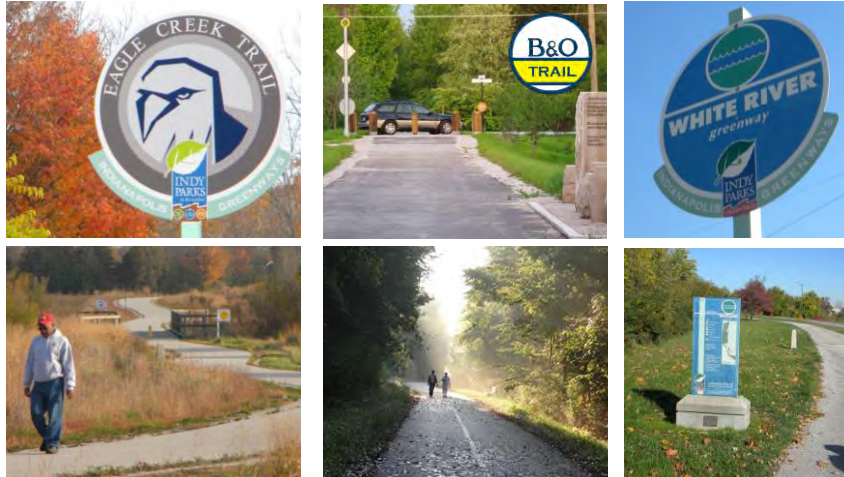
OTHER TRAIL-RELATED INITIATIVES:

- Trails in Speedway
- Trails in Hendricks County (including Plainfield and Brownsburg)



Indy greenways OVERVIEW

Opportunities for Greenways in Wayne Twp.



Indy greenways OVERVIEW

Opportunities for Greenways in Wayne Twp.





Indy greenways OVERVIEW

CONNECTIONS IN WAYNE TOWNSHIP...

Future Transit



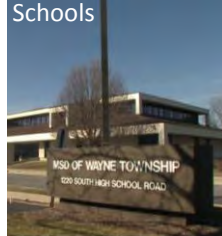
Parks and Special-use Facilities



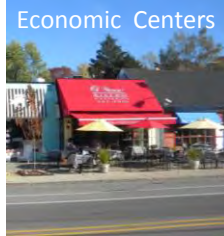
Bikeways and Bike Lanes



Schools



Economic Centers



Indy greenways OVERVIEW

GREENWAYS IN CENTER TOWNSHIP...



GREENWAY SEGMENTS IN CENTER TOWNSHIP:

- Monon Trail
- Pleasant Run Greenway
- Pogues Run Greenway
- White River Greenway
- Pennsy Trail
- Fall Creek Greenway
- Eagle Creek Greenway
- B&O (unbuilt)

OTHER TRAIL-RELATED INITIATIVES:

- Cultural Trail



Indy greenways OVERVIEW

GREENWAYS IN CENTER TOWNSHIP...



Indy greenways OVERVIEW

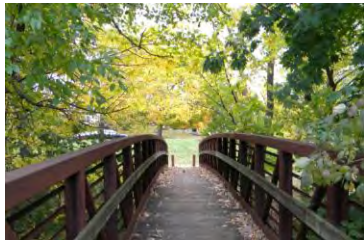
GREENWAYS IN CENTER TOWNSHIP...





Indy greenways OVERVIEW

GREENWAYS IN CENTER TOWNSHIP...



Indy greenways OVERVIEW

GREENWAYS IN CENTER TOWNSHIP...





Indy greenways OVERVIEW

GREENWAYS IN CENTER TOWNSHIP...



Indy greenways OVERVIEW

GREENWAYS IN CENTER TOWNSHIP...





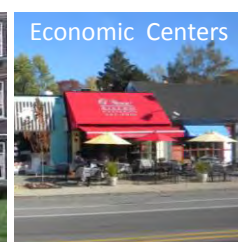
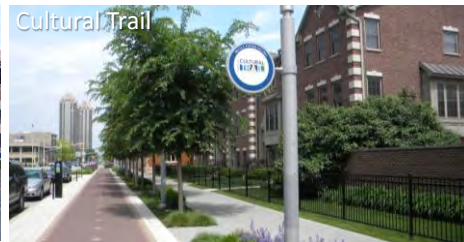
Indy greenways OVERVIEW

GREENWAYS IN CENTER TOWNSHIP...



Indy greenways OVERVIEW

CONNECTIONS IN CENTER TOWNSHIP...





Indy greenways OVERVIEW

CONNECTIONS IN CENTER TOWNSHIP...



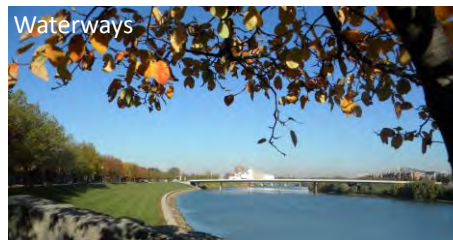
Cultural Districts



Parks and Open Space



Bike Facilities



Waterways



Indy greenways OVERVIEW

GREENWAYS IN WARREN TOWNSHIP...



GREENWAY SEGMENTS IN WARREN TOWNSHIP:

- Pennsy Trail
- Pleasant Run Greenway
- Pogues Run Greenway

OTHER TRAIL-RELATED INITIATIVES:

- Trail Development in Cumberland
- Pennsy (regional)



Indy greenways OVERVIEW

GREENWAYS IN WARREN TOWNSHIP...



Indy greenways OVERVIEW

GREENWAYS IN WARREN TOWNSHIP...





Indy greenways OVERVIEW

GREENWAYS IN WARREN TOWNSHIP...



Indy greenways OVERVIEW

GREENWAYS IN WARREN TOWNSHIP...





Indy greenways OVERVIEW

CONNECTIONS IN WARREN TOWNSHIP...

Future Transit



Parks and Open Space



Bikeways and Bike Lanes



Schools



Economic Centers



Indy greenways OVERVIEW

GREENWAYS IN DECATUR TOWNSHIP...



PLANNED GREENWAY SEGMENTS IN DECATUR TOWNSHIP:

- White River Greenway
- Little Buck Creek Greenway



Indy greenways OVERVIEW

PLANNED GREENWAYS IN DECATUR TWP...



Indy greenways OVERVIEW

PLANNED GREENWAYS IN DECATUR TWP...





Indy greenways OVERVIEW

CONNECTIONS IN DECATUR TOWNSHIP...

Public Transportation



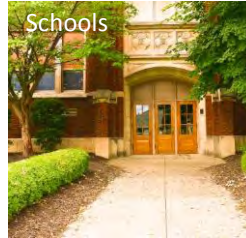
Parks and Special-use Facilities



Bikeways and Bike Lanes



Schools



Economic Centers



Indy greenways OVERVIEW

GREENWAYS IN PERRY TOWNSHIP...



GREENWAY SEGMENTS IN PERRY TOWNSHIP:

- Little Buck Creek Greenway

PLANNED GREENWAY SEGMENTS NEAR PERRY TOWNSHIP

- Pleasant Run Greenway
- Eagle Creek Greenway
- White River Greenway
- Greenwood Connections



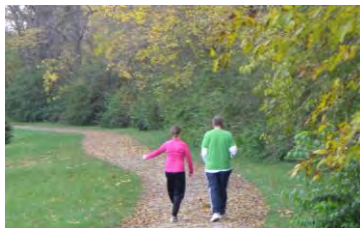
Indy greenways OVERVIEW

GREENWAYS IN PERRY TOWNSHIP...



Indy greenways OVERVIEW

GREENWAYS IN PERRY TOWNSHIP...





Indy greenways OVERVIEW

PLANNED GREENWAYS IN/NEAR PERRY TWP...



Indy greenways OVERVIEW

PLANNED GREENWAYS IN/NEAR PERRY TWP...





Indy greenways OVERVIEW

PLANNED GREENWAYS IN/NEAR PERRY TWP...



Indy greenways OVERVIEW

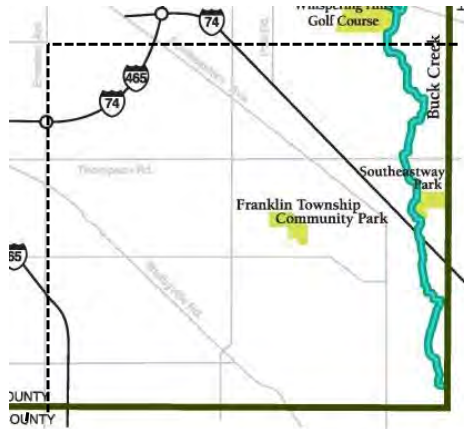
CONNECTIONS IN PERRY TOWNSHIP...





Indy greenways OVERVIEW

GREENWAYS IN FRANKLIN TOWNSHIP...



No existing or planned greenways in Franklin Township

GREENWAY SEGMENTS NEAR FRANKLIN TOWNSHIP

- Pleasant Run Greenway
- Trails in Greenwood



Indy greenways OVERVIEW

OPPORTUNITIES IN FRANKLIN TOWNSHIP?





Indy greenways OVERVIEW

CONNECTIONS IN FRANKLIN TOWNSHIP...

Public Transportation



Parks and Special-use Facilities

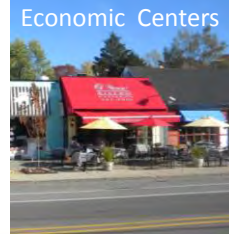


Bikeways and Bike Lanes

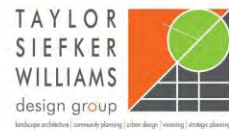


Schools

Economic Centers



master plan THEMES





master plan THEMES

I commute to work every day

I want amenities!

I want a safe place for my family to ride.

I want a safe place to run.

I want a connection from my neighborhood!

I want to run errands without my car.

What are the goals we are trying to achieve with this plan?



master plan THEMES





master plan THEMES



RECREATION

Provide opportunities for recreation throughout the City.



master plan THEMES

RECREATION

Provide opportunities for recreation throughout the City.



- Promote the use of greenways by all user types including walkers, bicyclist, families, and children.
- Provide opportunities for health and fitness.
- Expand recreational opportunities to underserved portions of the City.



master plan THEMES



master plan THEMES

ACCESS

Identify, promote, and increase access to the greenways for residents.



- Identify underserved portions of the City and seek ways to expand the greenway system in those areas.
- Identify connections to neighborhoods, neighborhood centers, and other areas that allow the trail to be more easily accessed by users.



master plan THEMES



master plan THEMES

CONNECTIVITY

Provide connections to neighborhoods and facilities throughout the community.



- Parks and other recreational facilities
- Waterways
- Neighborhoods, neighborhood centers and other places that encourage everyday use
- Other bike and pedestrian facilities (regional bike and pedestrian plan, on-street bike facilities)
- Regional trail, greenway, or bike route systems
- Public transit (existing and proposed)



master plan THEMES



Foster economic development and provide a positive economic benefit to the community.



master plan THEMES

ECONOMIC IMPACT

Use the greenways to foster economic development and provide a positive economic benefit to the community.



- Provide connections to neighborhood centers and other commercial centers near the trails.
- Identify implementable steps and prioritize projects that will have an economic benefit to the system.



master plan THEMES



master plan THEMES

ENVIRONMENTAL STEWARDSHIP

Promote responsible and sustainable stewardship of Indianapolis' greenway corridors.



- Identify conservation and preservation areas appropriate to the Indy Greenways system.
- Identify and encourage appropriate vegetation and land cover.
- Develop best practices for conservation and preservation.
- Develop maintenance techniques and standards for all natural, conservation, or preservation areas.
- Protect important wildlife habitat and promote the conservation of open space, forests and wetland areas.



master plan THEMES



master plan THEMES

INTER-AGENCY COORDINATION

Identify appropriate oversight and coordination with related agencies overseeing similar bicycle and pedestrian functions.



- Examine how the greenways fit within the City's overall connectivity goals.
- Clearly define the role Indy Greenways should play in the oversight of the greenway system.
- Identify all roles and responsibilities for greenway functions (planning, development, maintenance, security).
- Establish clear protocols and expectations for the ongoing development and maintenance of the system.



master plan THEMES

SUSTAINING A WORLD-CLASS GREENWAY

Promote the continued recognition of Indy Greenways

INTER-AGENCY COORDINATION

ENVIRONMENTAL STEWARDSHIP

ECONOMIC IMPACT

RECREATION

ACCESS

CONNECTIVITY



SUSTAINING A WORLD-CLASS SYSTEM

Promote the continued recognition of Indy Greenways as one of the nation's world-class greenways systems.



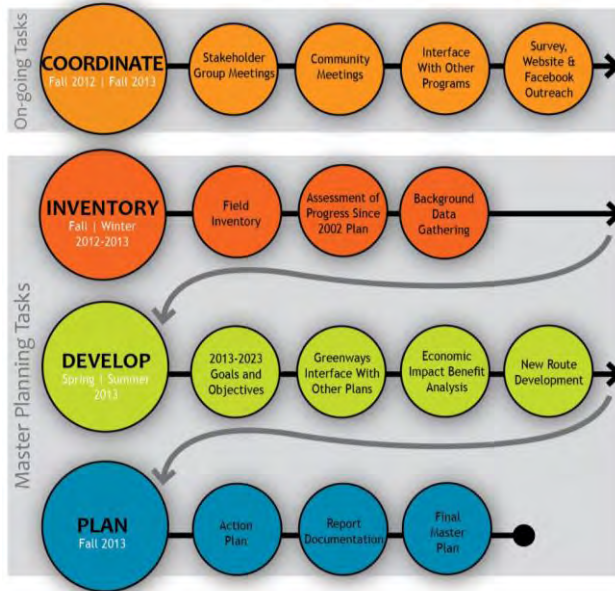
- Continue to develop the Indy Greenway systems as a world-class system, using the most current standards and best practices.
- Further develop the unique identity of the Greenways and develop consistent placement of character across the system.
- Identifying and implement sustainable, state-of-the-art standards for amenities throughout the system.
- Broaden the interface between the greenways and neighborhoods, community centers, and other facilities.



master plan THEMES



plan PROCESS





public INVOLVEMENT

PUBLIC INPUT
 There are many ways to be involved with the project...

- **Promotional information**

Distributed at locations throughout City.



public INVOLVEMENT

PUBLIC INPUT...

There are many ways to be involved with the project...



- Promotional information
- **Project website**

www.indygreenwaysmasterplan.wordpress.com



public INVOLVEMENT

PUBLIC INPUT

There are many ways to be involved with the project...



- Promotional information
- Project website
- **Project Facebook page**



<http://www.facebook.com/#!/IndyGreenwaysMasterPlan>



public INVOLVEMENT

PUBLIC INPUT

There are many ways to be involved with the project...



- Promotional information
- Project website
- Project Facebook page
- **Project office**

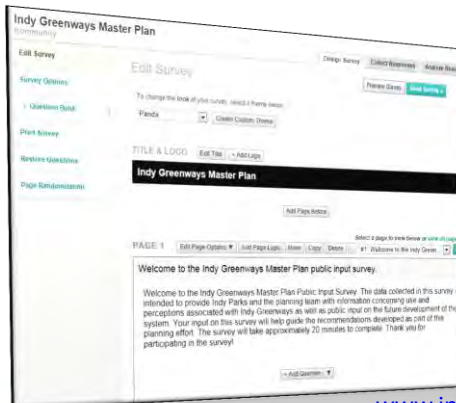
Boulevard Station where the Monon meets 38th Street.
Walk-ins encouraged. To schedule an appointment, email:
greenways@TSWDesignGroup.com .



public INVOLVEMENT

PUBLIC INPUT

There are many ways to be involved with the project...



- Promotional information
- Project website
- Project Facebook page
- Project office
- **Public input survey**

www.indygreenwaysmasterplan.wordpress.com



public INVOLVEMENT

PUBLIC INPUT

There are many ways to be involved with the project...



- Promotional information
- Project website
- Project Facebook page
- Project office
- Public input survey
- **Greenways Development Committee meetings televised on Channel 16**



public INVOLVEMENT

PUBLIC INPUT

There are many ways to be involved with the project...



- Promotional information
- Project website
- Project Facebook page
- Project office
- Public input survey
- Televised Greenways Development Committee meetings
- **Public meetings and workshops**
 - Meetings in each Township
 - 2 rounds of meetings



public INVOLVEMENT

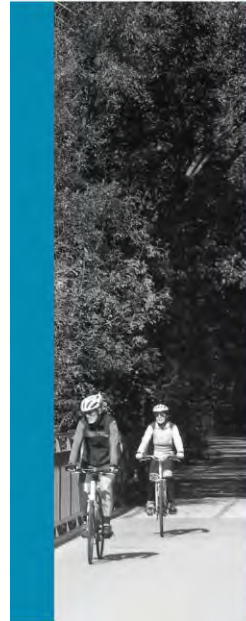
STAY INVOLVED...



... to share your stories and priorities.



for more INFO:



FOLLOW

To find out more about community meetings and other events, Like Us on Facebook or check out the website at:
www.indygreenwaysmasterplan.wordpress.com

MEET

Set up a meeting at the project office - open Wednesdays 8:30-4:30
Boulevard Station
38th Street @ Monon Trail

CONTACT

For specific questions regarding this planning effort contact:
greenways@tswdesigngroup.com

